



ADD: Unit 1202-3, 12th Floor, No. 1134,
Jimei North Road, Software Park Phase III,
Torch High-tech Zone, Xiamen, China
TEL: +86 151 6002 8750
E-MAIL: jordan.chen@sendsheensolar.com



厦门盛曦欣能源科技有限公司

Xiamen SendSheen Sun Energy Technology CO.,Ltd

专业/求真/务实/未来

Profession/Truth/Pragmatic/Future

光伏支架解决方案领跑者
Leader in solar stand solutions

COMPANY PROFILE

Xiamen SendSheen Sun Energy Technology CO.,Ltd

Located in Xiamen, China, Xiamen SendSheen Sun Energy Technology CO., Ltd is a high-tech enterprises engaged in the R&D, manufacturing and marketing, focusing on the development and appliance of solar mounting system, solar mounting accessories, solar power system and other clean energy products.

Years of experience in the photovoltaic industry as well as strong research and development capabilities and fast, high-quality manufacturing capabilities enable us to respond to any rapid needs of our customers. In line with the concept of "integrity first, people-oriented, talent as the core competitiveness", attaches importance to the career planning and personal development of employees, has a strong corporate cohesion, has initially built a global marketing and promotion, with rich experience in photovoltaic mounting structure design, research and development capabilities and fast high-quality manufacturing capabilities, committed to becoming a one-stop new energy manufacturers, partners, To provide customers with stable, convenient, cost-effective photovoltaic system mounting structure series solutions.

With the development of society, the increasing demand for energy, the depletion of traditional energy and the deterioration of climate environment seriously affect and restrict the sustainable development of social economy. SendSheen Sun is committed to the continuous innovation of photovoltaic products, and is determined to continuously transform the most abundant solar energy of nature into the cleanest, best quality and most sustainable new energy. SendSheen Sun is willing to work with you to make progress together, develop together, create a better future for us and customers, and put on a layer of "new energy coat" for the earth.



产品介绍

PRODUCT INTRODUCTION

Roof Mounting System

- Metal Roof Mounting Series ————— 03
- Metal Roof L-Foot Series ————— 05
- Roof Hook Series ————— 07
- Adjustable Front And Rear Leg ————— 08
- Flat Roof Mounting Series ————— 09
- Flat Roof Mounting Series ————— 13
- Quick Mounting Rail Series/Other Accessories ————— 15

Ground Solar Mounting Series

- Aluminum Ground Mount ————— 21
- Steel Ground Mount ————— 22
- PHC Pile Ground Mount ————— 24
- Pole Steel Ground Mount ————— 25
- Ground Screw Solar Mount ————— 26

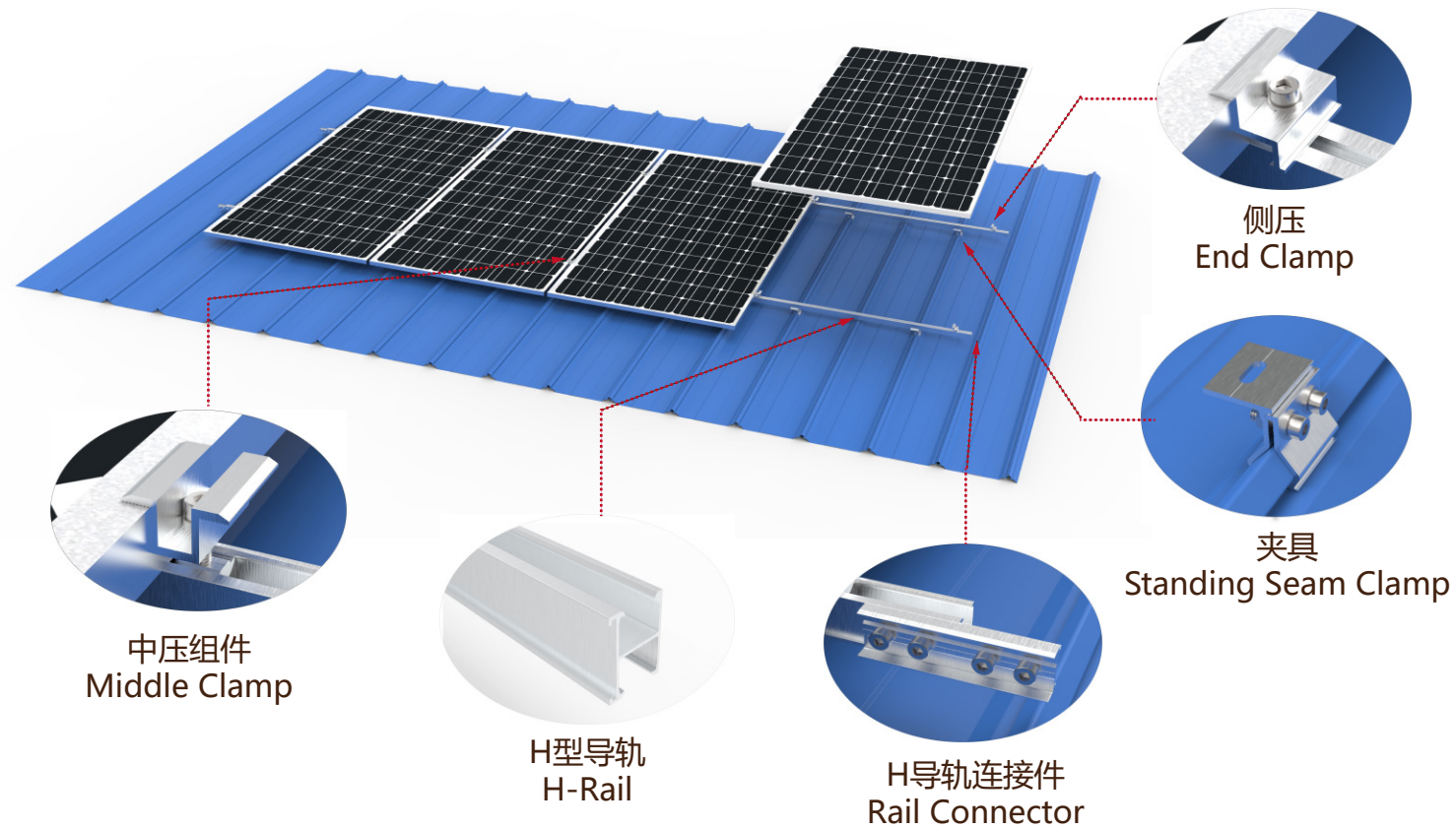
Carport Solar Mounting Series

- Steel Carport Mount ————— 27

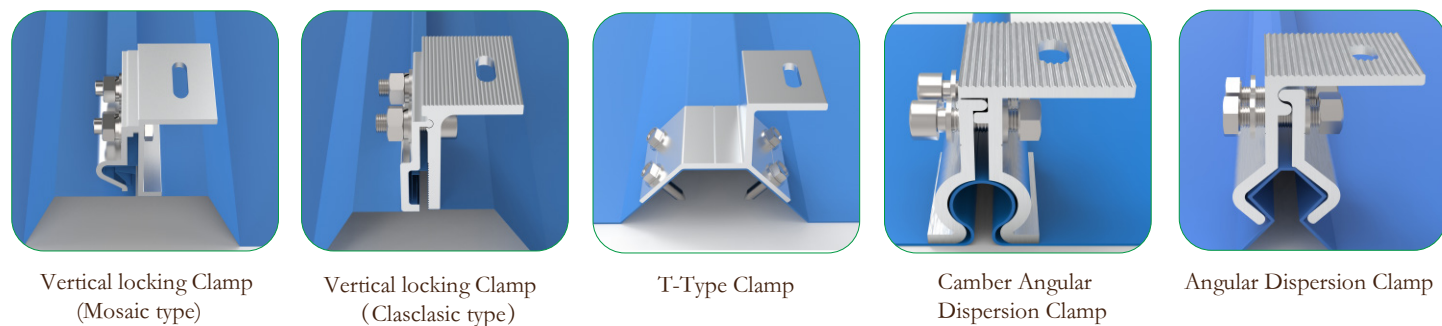
Other Solar Mounting Series

- Balcony Solar Mount ————— 28
- Vertical Solar Mount ————— 29
- Solar Farm Mount ————— 30

Metal Roof Mounting Series - H-Rail



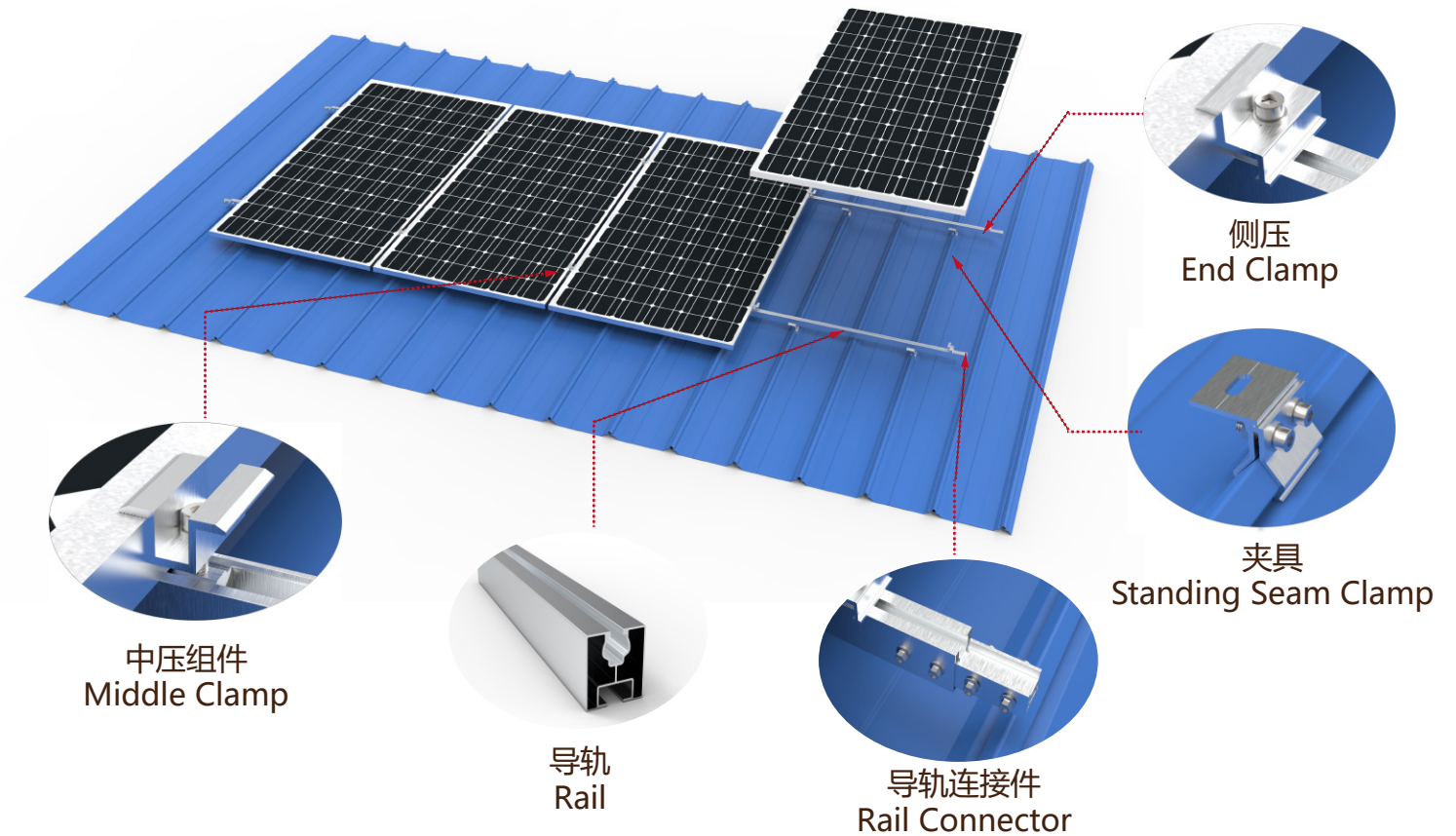
Suitable For Metal Roof Type



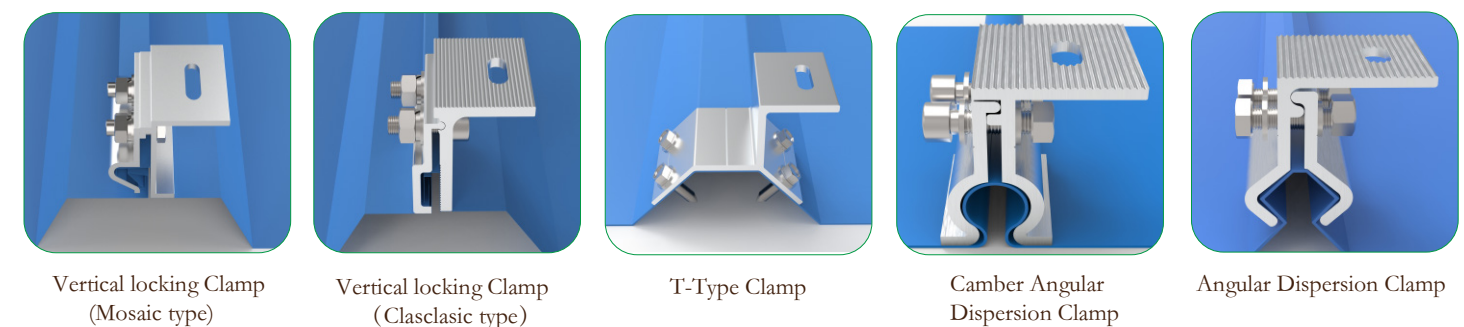
- Technical Details:
- 1.Installation site; Metal Roof.
 - 2.Module Orientation: : Module Vertical Or Landscape
 - 3.Clamp Pull-Out Eesistance: $\geq 1.5\text{KN}$
 - 4.Wind load: $\leq 60\text{m/s}$
 - 5.Snow load: $\leq 1.6\text{KN}/\text{m}^2$
 - 6.Material: Aluminum AL6005-T5 (AA10~AA20)
 - 7.Surface Treatment: Natural anodized、Black anodized、And other color customizations
 - 8.Quality Warranty 12 years, Service life of 25 years.

Applicable standard: Japan JIS C8955:2017、China GB 50009 2001、Europe EN 1991-1-4:2005、India: IS:875、Australia AS NZ 1170、USA ASCE7 wind load、Malaysia MS 1553:2002 And other national standards.

Metal Roof Mounting Series-UNB-Rail



Suitable For Metal Roof Type

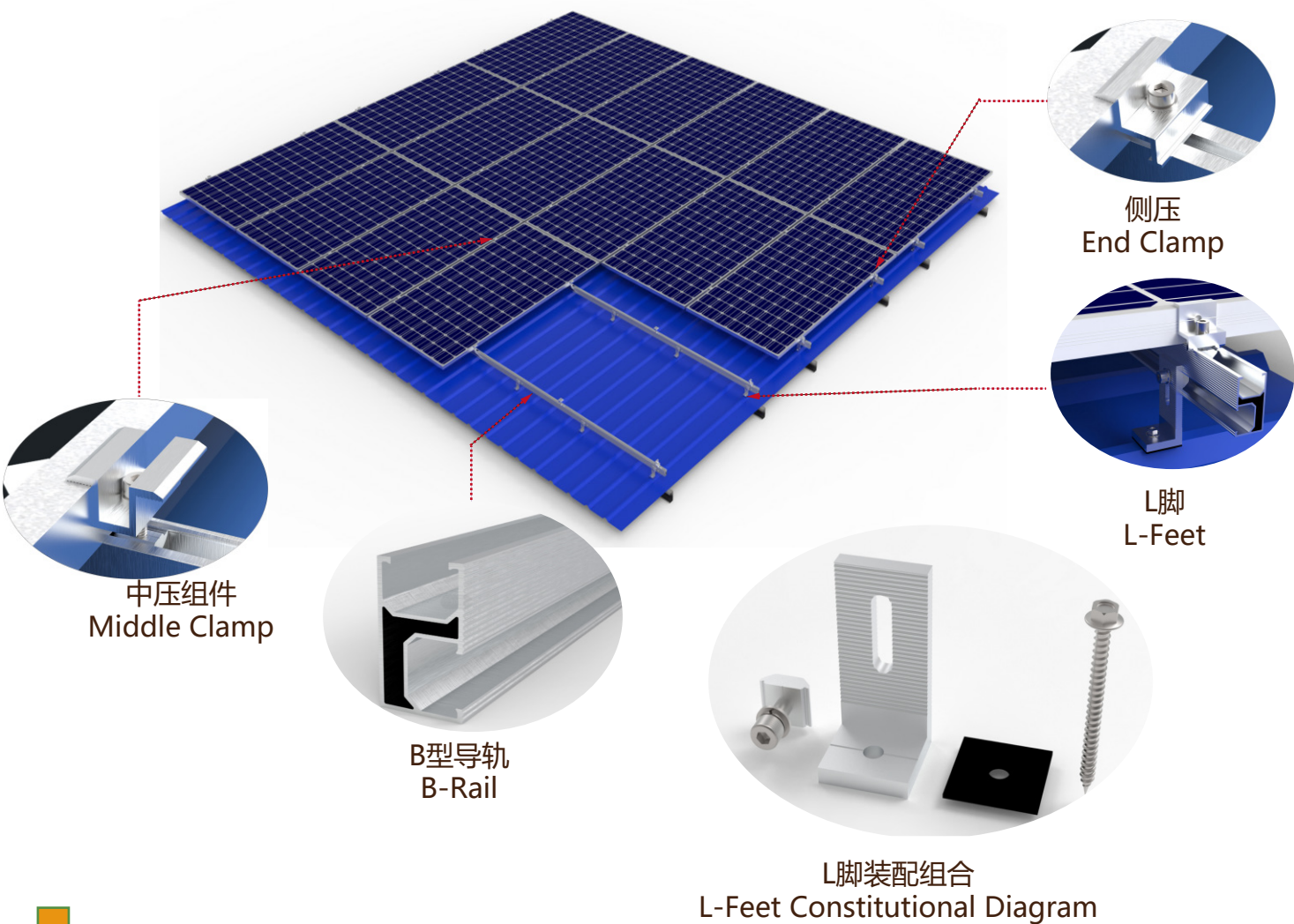


- Technical Details:
- 1.Installation site; Metal Roof.
 - 2.Module Orientation: : Module Vertical Or Landscape
 - 3.Clamp Pull-Out Eesistance: $\geq 1.5\text{KN}$
 - 4.Wind load: $\leq 60\text{m/s}$
 - 5.Snow load: $\leq 1.6\text{KN}/\text{m}^2$
 - 6.Material: Aluminum AL6005-T5 (AA10~AA20)
 - 7.Surface Treatment: Natural anodized、Black anodized、And other color customizations
 - 8.Quality Warranty 12 years, Service life of 25 years.

Applicable standard: Japan JIS C8955:2017、China GB 50009 2001、Europe EN 1991-1-4:2005、India: IS:875、Australia AS NZ 1170、USA ASCE7 wind load、Malaysia MS 1553:2002 And other national standards.



Metal Foof L-Feet Serise



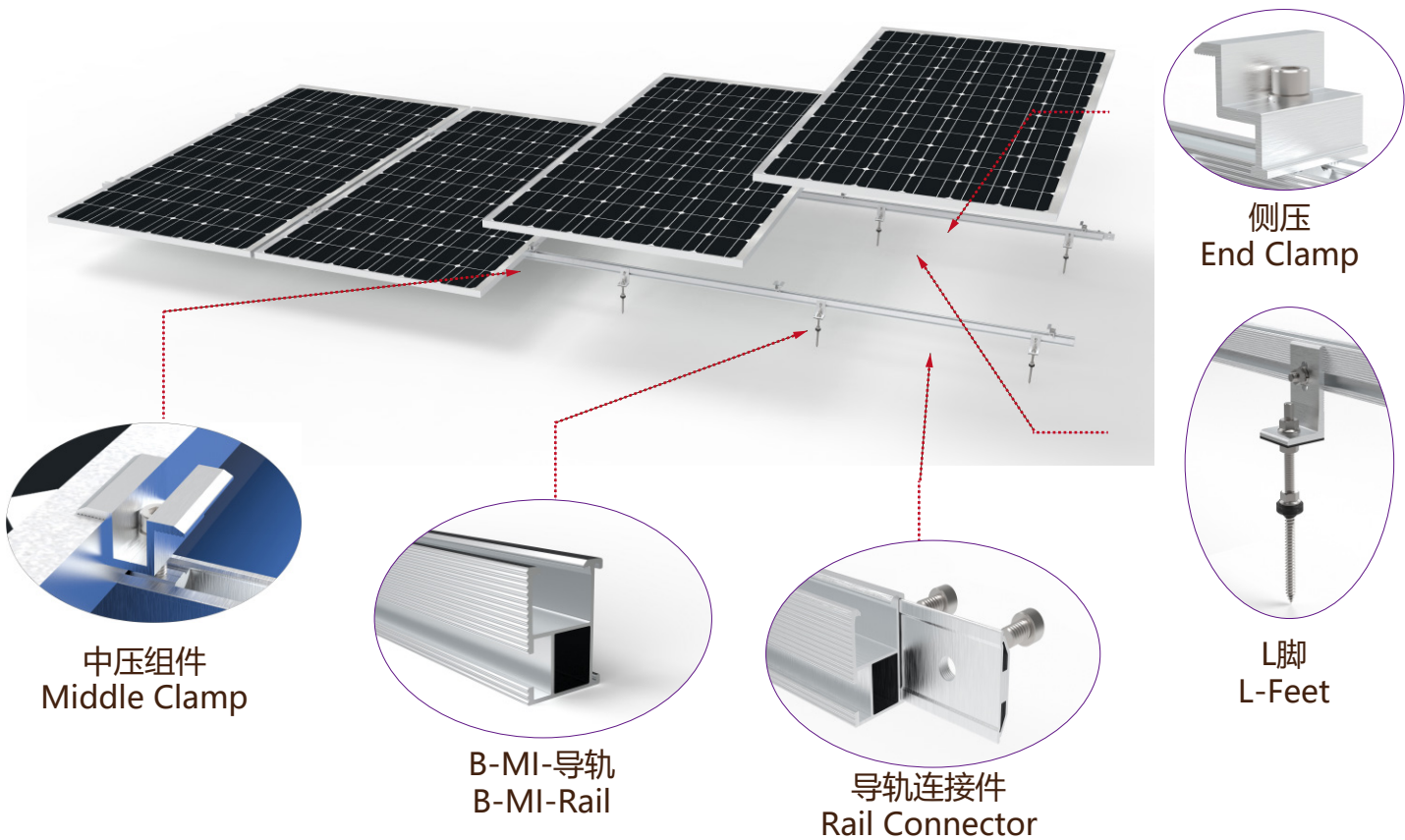
PRODUCT INTRODUCTION

Application scenario: Metal Roof

Metal Foof L-Feet Serise,Material aluminum Al6005-t5, through professional design to make the support parts and accessories perfectly connected, easy to install, safe and reliable.

- Technical Details:
1.Installation site; Metal Roof。
2.Module Orientation: : Module Vertical Or Landscape
3.L-Foot Pull-Out Eesistance: ≥1.2KN
4.Wind load: ≤60m/s
- 5.Snow load: ≤1.6KN/ m²
6.Material: Aluminum AL6005-T5 (AA10~AA20)
7.Surface Treatment: Natural anodized、Black anodized、
And other color customizations
8.Quality Warranty 12 years, Service life of 25 years.
- Applicable standard: Japan JIS C8955:2017、 China GB 50009 2001、 Europe EN 1991-1-4:2005、 India: IS:875、
Australia AS NZ 1170、 USA ASCE7 wind load、 Malaysia MS 1553:2002 And other national standards。

Metal Foof L-Feet Serise



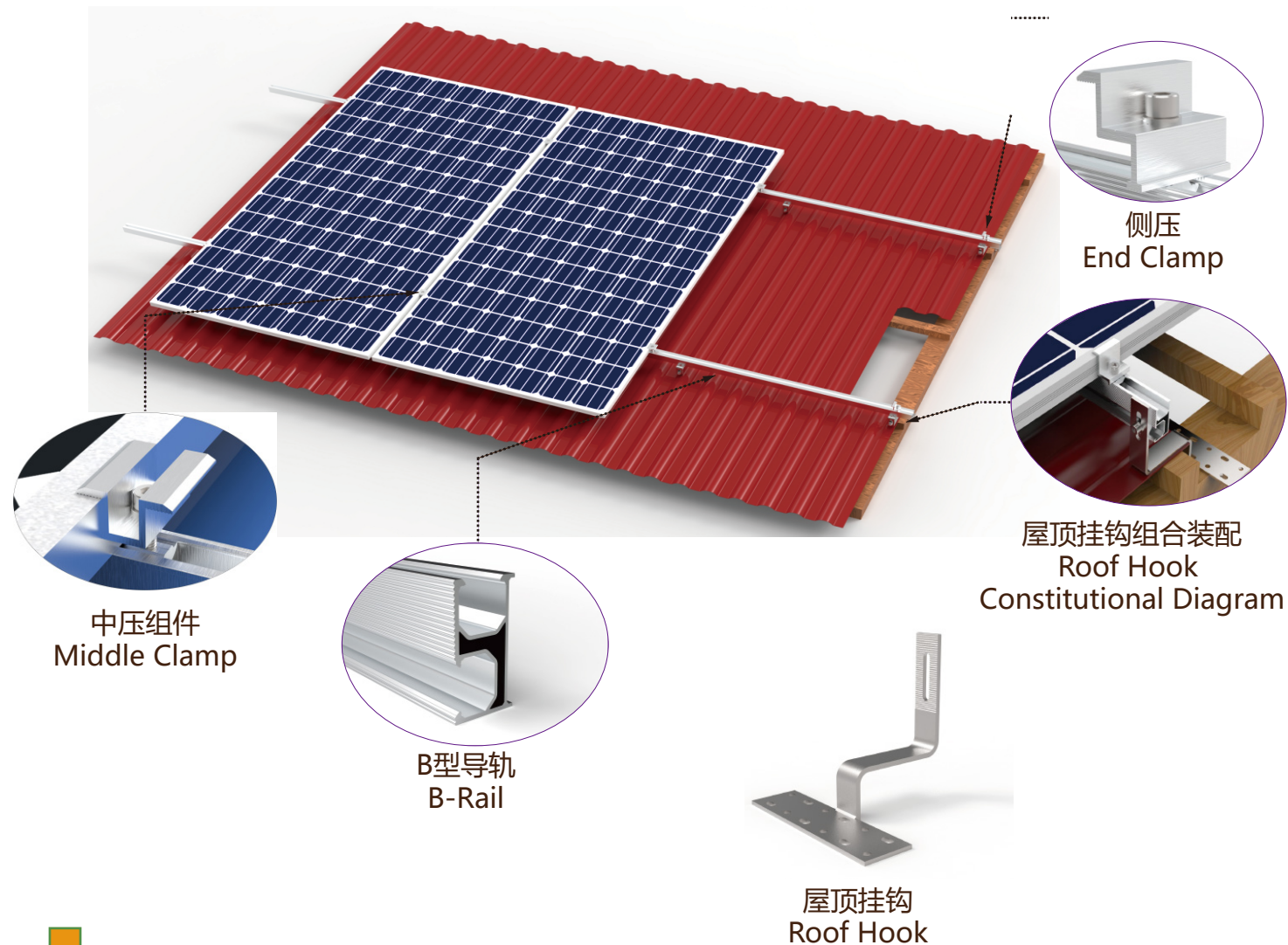
PRODUCT INTRODUCTION

Application scenario: Metal Roof

Metal Foof L-Feet Serise,Material aluminum Al6005-t5, through professional design to make the support parts and accessories perfectly connected, easy to install, safe and reliable.

- Technical Details:
1.Installation site; Metal Roof。
2.Module Orientation: : Module Vertical Or Landscape
3.L-Foot Pull-Out Eesistance: ≥1.2KN
4.Wind load: ≤60m/s
- 5.Snow load: ≤1.6KN/ m²
6.Material: Aluminum AL6005-T5 (AA10~AA20)
7.Surface Treatment: Natural anodized、 Black anodized、
And other color customizations
8.Quality Warranty 12 years, Service life of 25 years.
- Applicable standard: Japan JIS C8955:2017、 China GB 50009 2001、 Europe EN 1991-1-4:2005、 India: IS:875、
Australia AS NZ 1170、 USA ASCE7 wind load、 Malaysia MS 1553:2002 And other national standards。

Roof Hook Series



PRODUCT INTRODUCTION

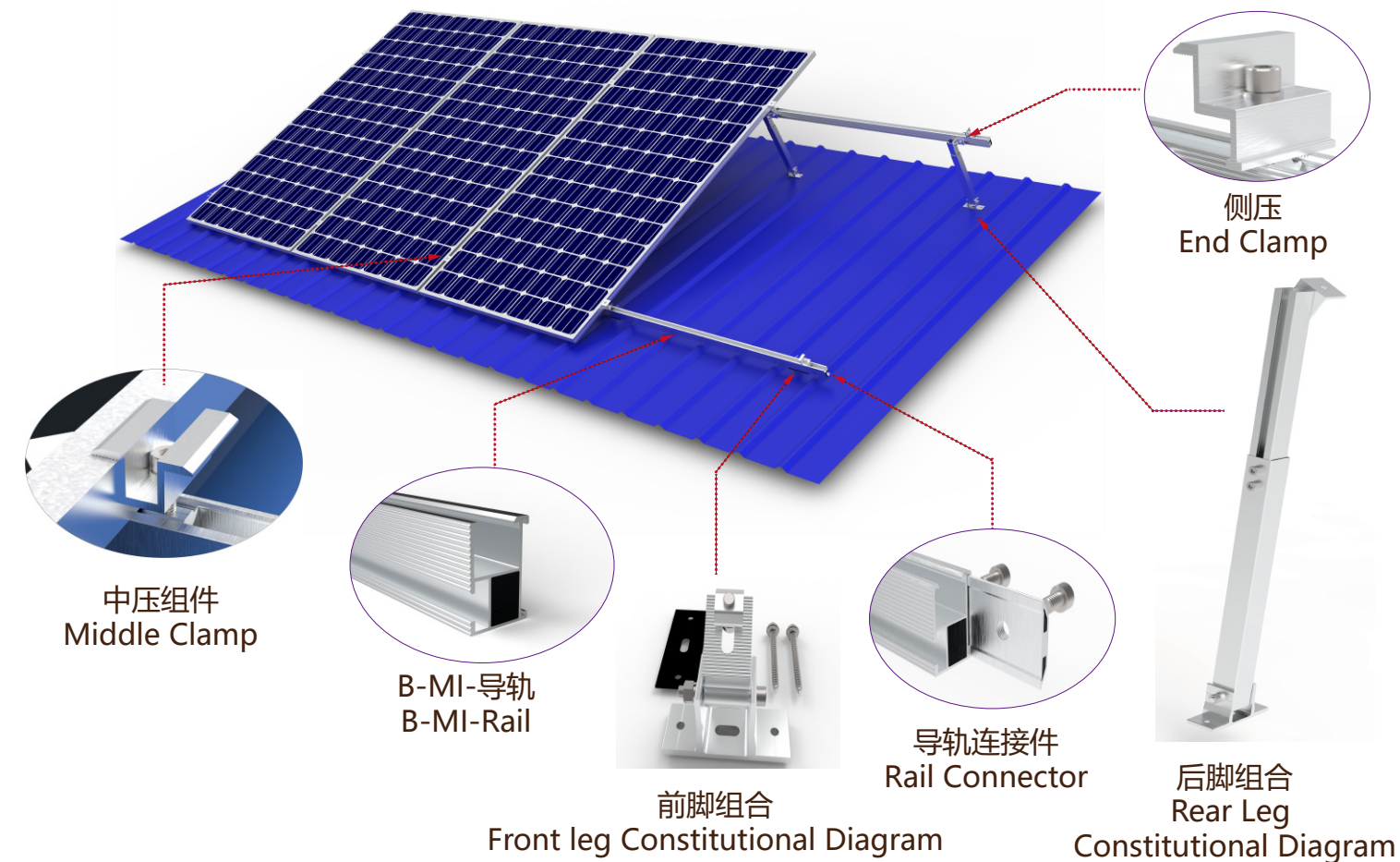
Application scenario : Pitched Tile Roof/Asphalt shingle roofs

Roof Hook Series,Material Stainless steel、aluminum AL6005-t5, through professional design to make the support parts and accessories perfectly connected, easy to install, safe and reliable..

- | | |
|--|--|
| <p>Technical Details:</p> <ol style="list-style-type: none"> 1.Installation site: Pitched Tile/Asphalt shingle Roof. 2.Module Orientation: : Module Vertical Or Landscape 3.Hook Pull-Out Eesistance: $\geq 1.2\text{KN}$ 4.Wind load: $\leq 60\text{m/s}$ | <ol style="list-style-type: none"> 5.Snow load: $\leq 1.6\text{KN}/\text{m}^2$ 6.Material: Stainless steel/Aluminum AL6005-T5 (AA10~AA20) 7.Surface Treatment: Shot Blasting、Natural anodized、Black anodized、And other color customizations. 8.Quality Warranty 12 years, Service life of 25 years. |
|--|--|

Applicable standard: Japan JIS C8955:2017、China GB 50009 2001、Europe EN 1991-1-4:2005、India: IS:875、Australia AS NZ 1170、USA ASCE7 wind load、Malaysia MS 1553:2002 And other national standards.

Adjustable From And Rear Leg Series



PRODUCT INTRODUCTION

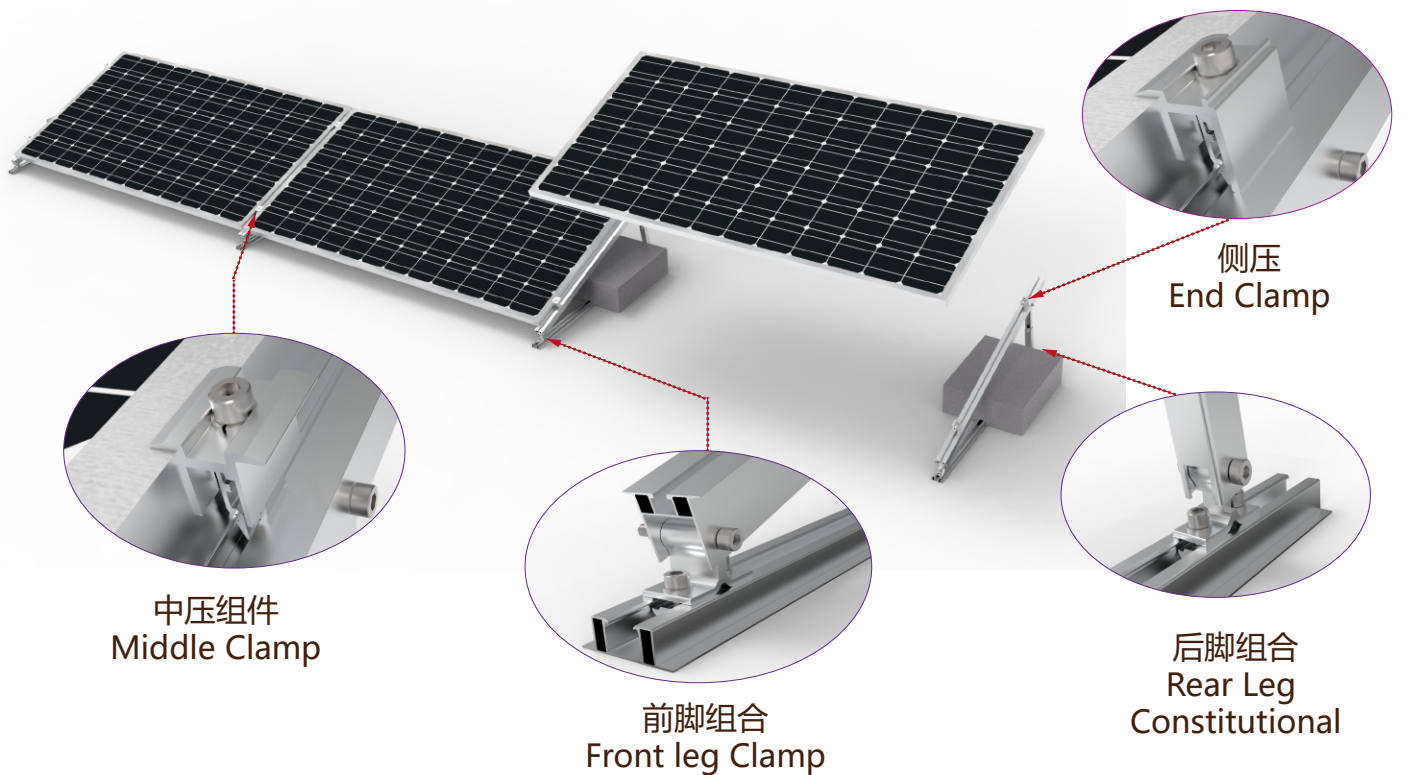
Application scenario: Metal/Flat Roof

Adjustable From And Rear Leg Series,Material aluminum AL6005-t5, through professional design to make the support parts and accessories perfectly connected, easy to install, safe and reliable.

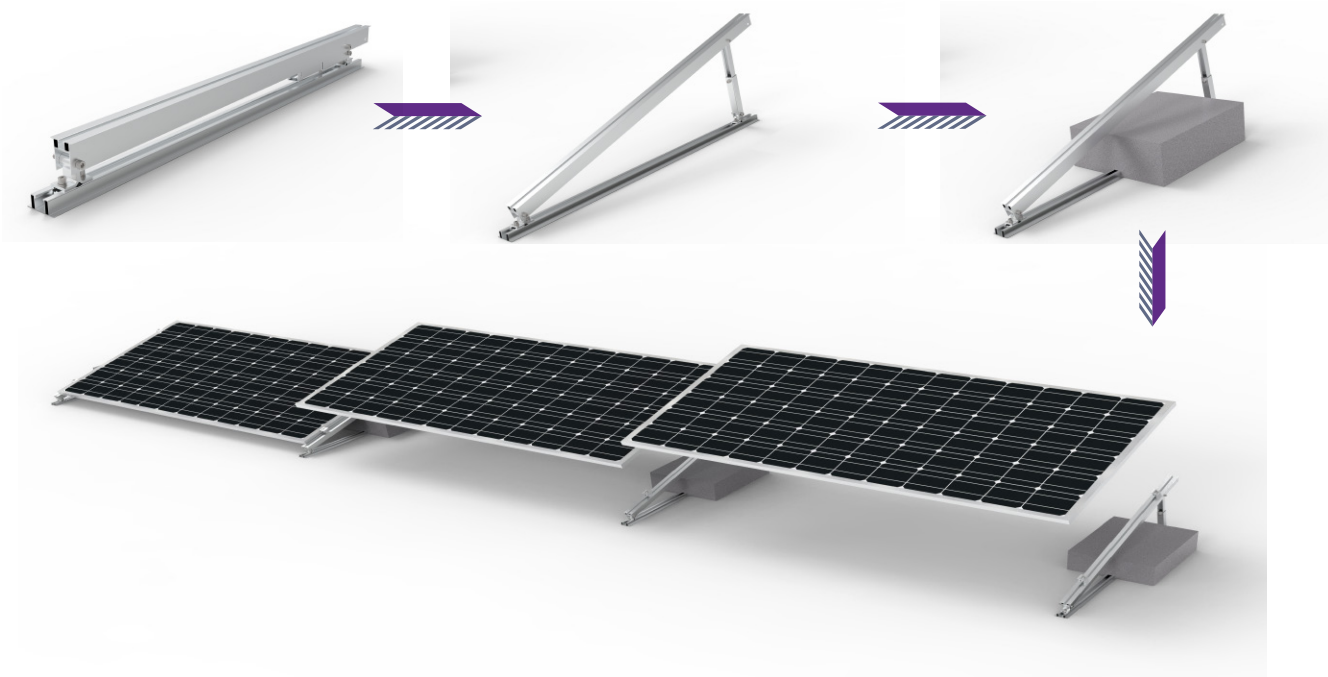
- | | |
|--|--|
| <p>Technical Details:</p> <ol style="list-style-type: none"> 1. Angle; $5\sim 10^\circ$ / $10\sim 20^\circ$ / $15\sim 30^\circ$ / $20\sim 40^\circ$. 2.Module Orientation: : Module Vertical Or Landscape 3.Pull-Out Eesistance: $\geq 1.2\text{KN}$ 4.Wind load: $\leq 60\text{m/s}$ | <ol style="list-style-type: none"> 5.Snow load: $\leq 1.6\text{KN}/\text{m}^2$ 6.Material: Aluminum AL6005-T5 (AA10~AA20) 7.Surface Treatment: Natural anodized、Black anodized、And other color customizations. 8.Quality Warranty 12 years, Service life of 25 years. |
|--|--|

Applicable standard: Japan JIS C8955:2017、China GB 50009 2001、Europe EN 1991-1-4:2005、India: IS:875、Australia AS NZ 1170、USA ASCE7 wind load、Malaysia MS 1553:2002 And other national standards.

Flat Roof Mounting Series-Ballast Brack



Brief Installation Guide

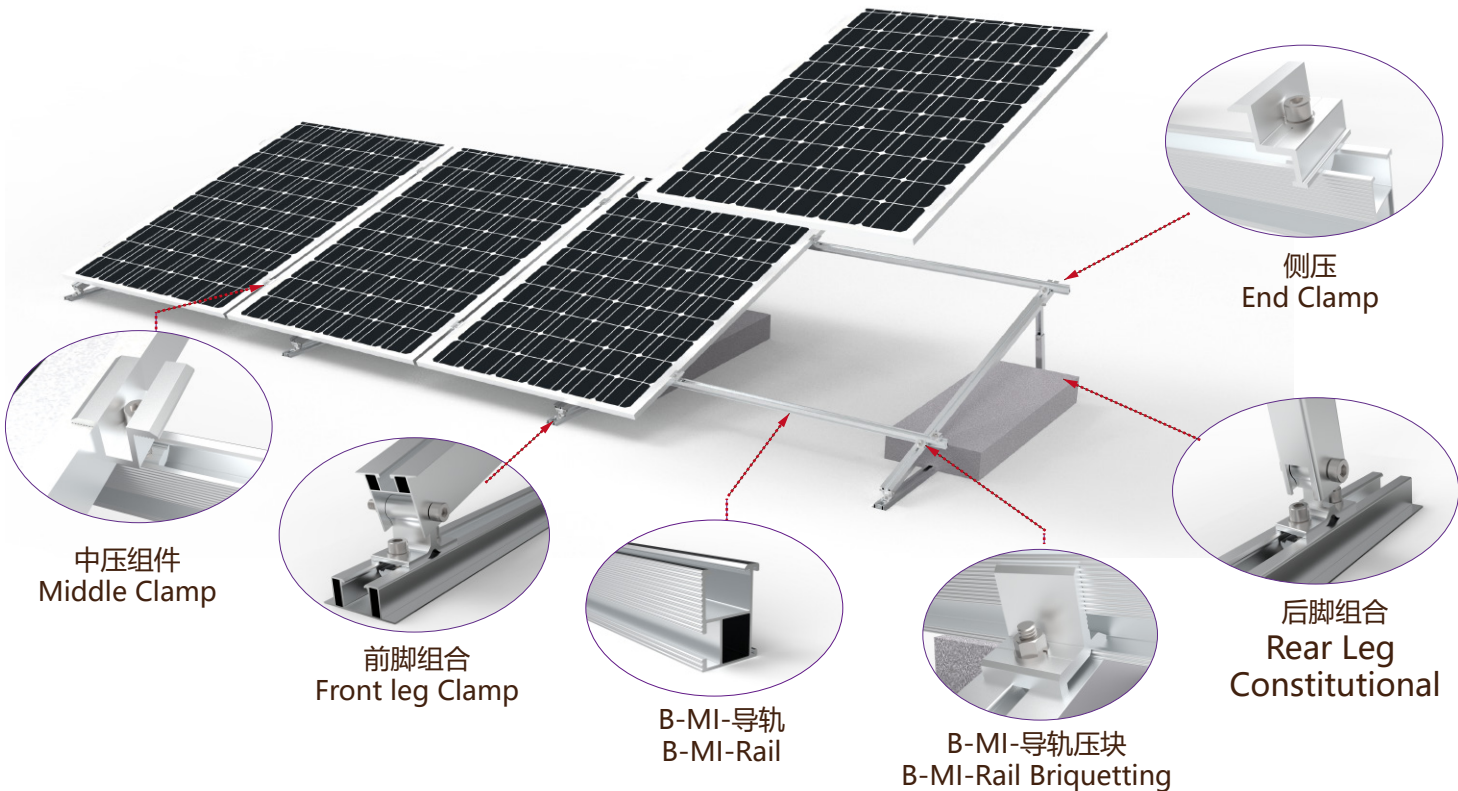


- Technical Details:

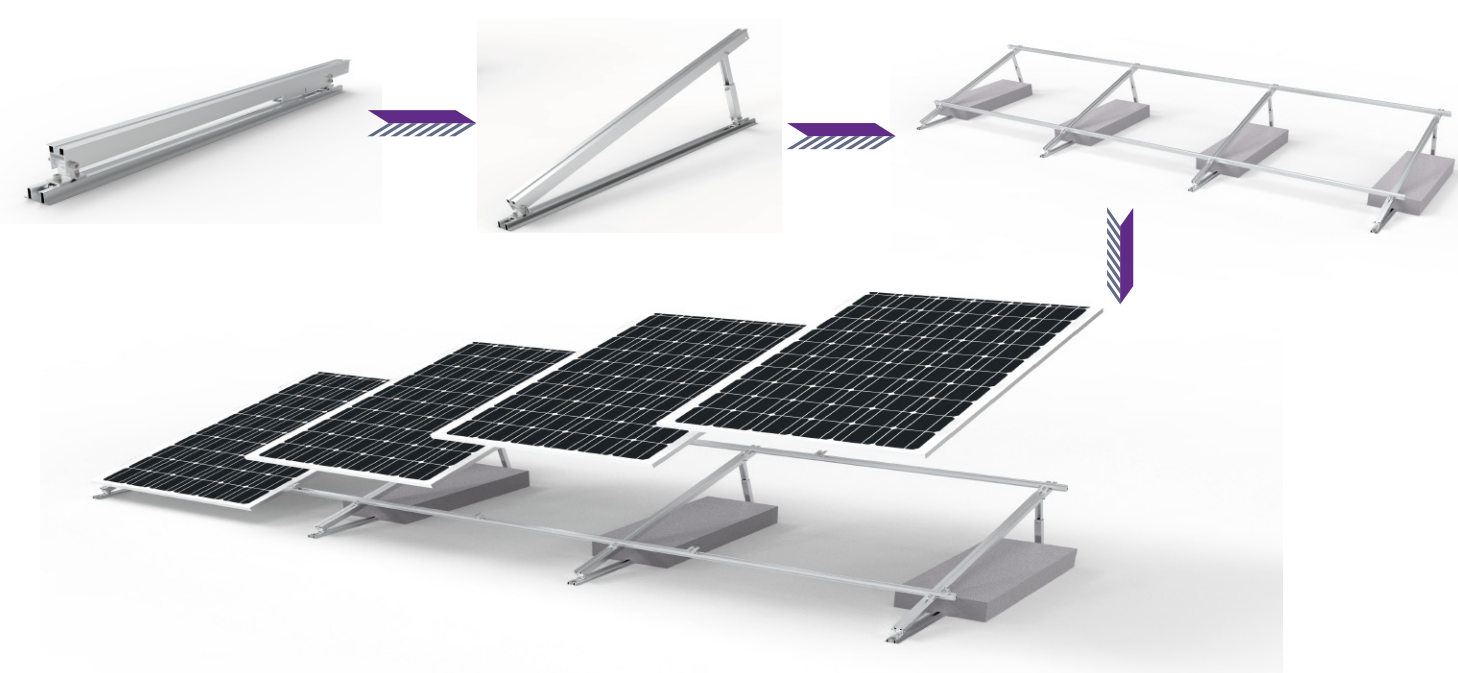
 - 1.Installation site; Flat Roof
 - 2.Module Orientation; Landscape
 - 3.Angle; 5~10° / 10~20° / 15~30° / 20~40° 。
 - 4.Wind load: ≤60m/s
- 5.Snow load;≤1.6KN/ m²
 - 6.Material;Aluminum AL6005-T5 (AA10~AA20)
 - 7.Surface Treatment: Natural anodized、Black anodized、And other color customizations
 - 8.Quality Warranty 12 years, Service life of 25 years.

Applicable standard: Japan JIS C8955:2017、China GB 50009 2001、Europe EN 1991-1-4:2005、India: IS:875、Australia AS NZ 1170、USA ASCE7 wind load、Malaysia MS 1553:2002 And other national standards。

Flat Roof Mounting Series-Ballast Brack(Add Rail)



Brief Installation Guide

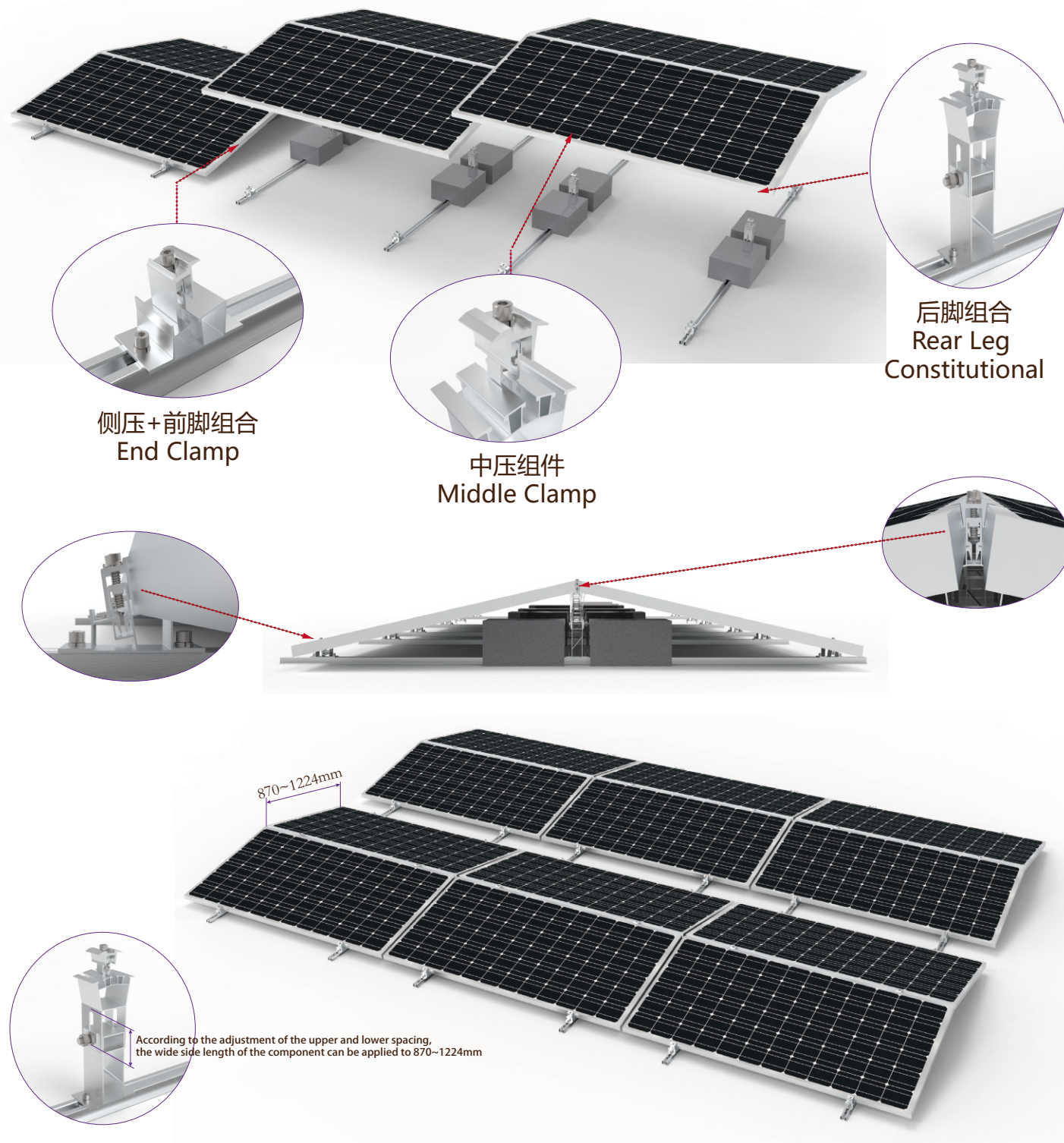


- Technical Details:

 - 1.Installation site; Flat Roof
 - 2.Module Orientation; Module Vertical
 - 3.Angle; 5~10° / 10~20° / 15~30° / 20~40° 。
 - 4.Wind load: ≤60m/s
- 5.Snow load;≤1.6KN/ m²
 - 6.Material;Aluminum AL6005-T5 (AA10~AA20)
 - 7.Surface Treatment: Natural anodized、Black anodized、And other color customizations
 - 8.Quality Warranty 12 years, Service life of 25 years.

Applicable standard: Japan JIS C8955:2017、China GB 50009 2001、Europe EN 1991-1-4:2005、India: IS:875、Australia AS NZ 1170、USA ASCE7 wind load、Malaysia MS 1553:2002 And other national standards。

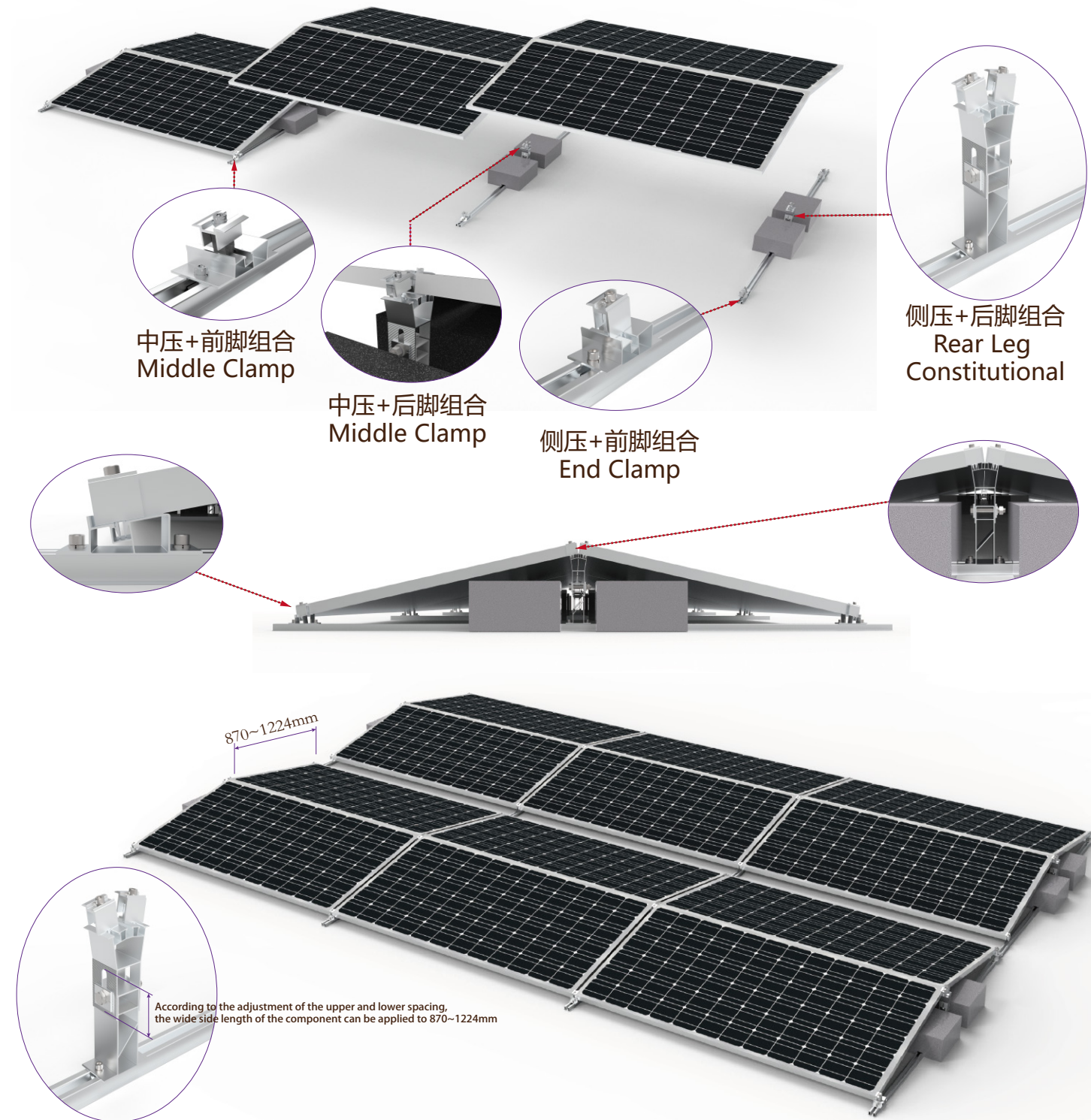
Flat Roof Ballast Brack(FRONT & REAR FOOT)



- Technical Details:
- 1.Installation site; Flat Roof
 - 2.Module Orientation; Landscape
 - 3.Angle; 10°
 - 4.Wind load; $\leq 60\text{m/s}$
 - 5.Snow load; $\leq 1.6\text{KN/m}^2$
 - 6.Material; Aluminum AL6005-T5 (AA10~AA20)
 - 7.Surface Treatment; Natural anodized、Black anodized、And other color customizations
 - 8.Quality Warranty 12 years, Service life of 25 years.

Applicable standard: Japan JIS C8955:2017、China GB 50009 2001、Europe EN 1991-1-4:2005、India: IS:875、Australia AS NZ 1170、USA ASCE7 wind load、Malaysia MS 1553:2002 And other national standards。

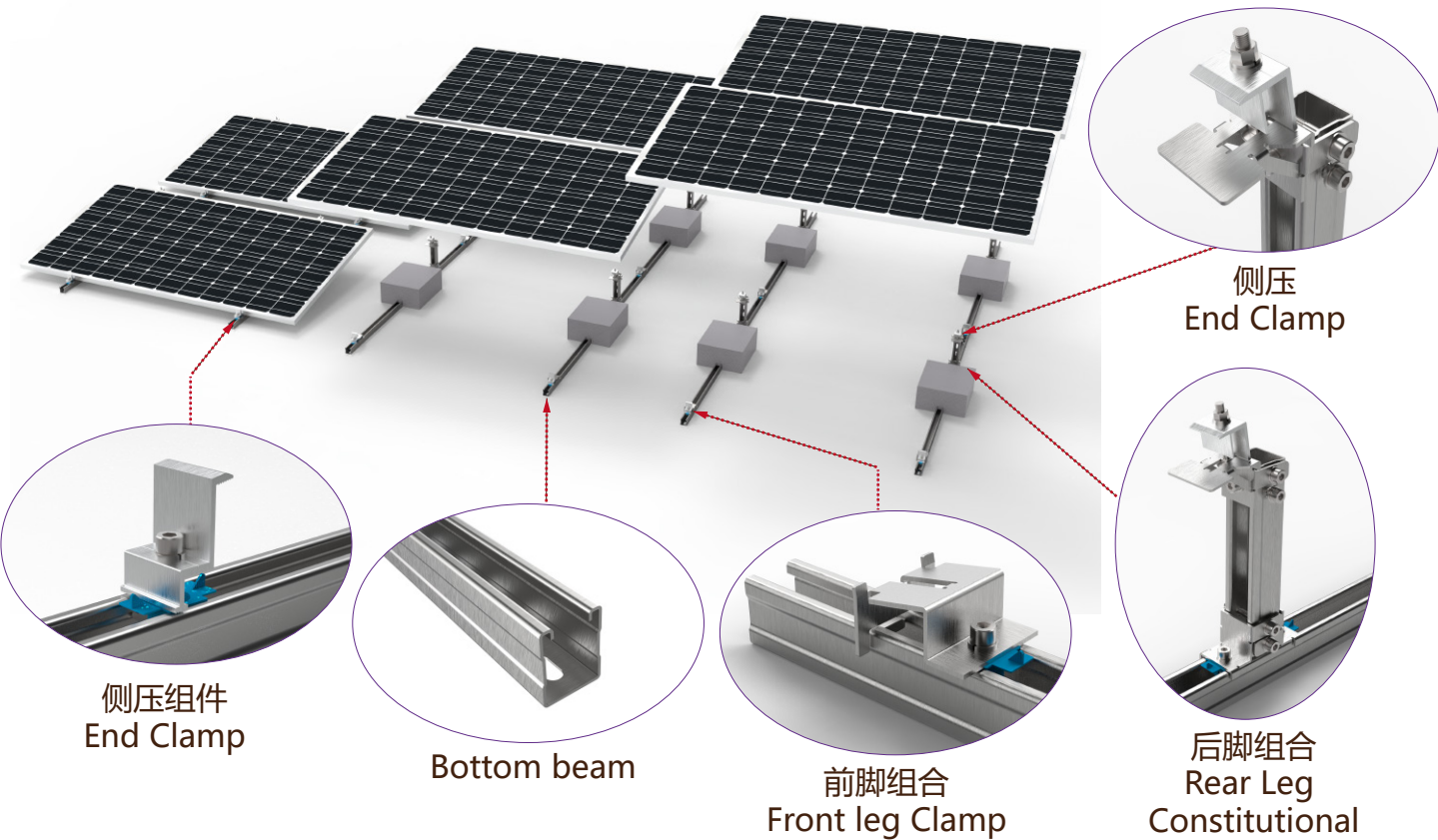
Flat Roof Ballast Brack(FRONT & REAR FOOT)



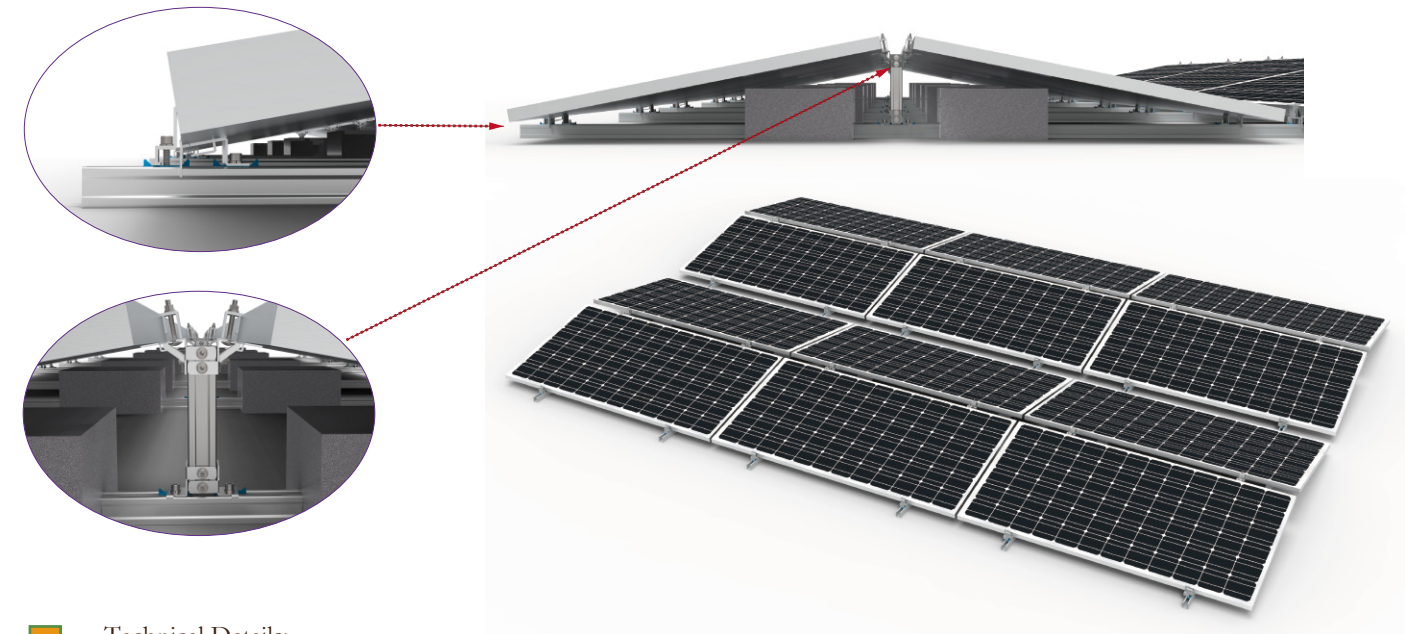
- Technical Details:
- 1.Installation site; Flat Roof
 - 2.Module Orientation; Landscape
 - 3.Angle; 10°
 - 4.Wind load; $\leq 60\text{m/s}$
 - 5.Snow load; $\leq 1.6\text{KN/m}^2$
 - 6.Material; Aluminum AL6005-T5 (AA10~AA20)
 - 7.Surface Treatment; Natural anodized、Black anodized、And other color customizations
 - 8.Quality Warranty 12 years, Service life of 25 years.

Applicable standard: Japan JIS C8955:2017、China GB 50009 2001、Europe EN 1991-1-4:2005、India: IS:875、Australia AS NZ 1170、USA ASCE7 wind load、Malaysia MS 1553:2002 And other national standards。

Flat Roof Mounting Series-Steel Ballast Brack

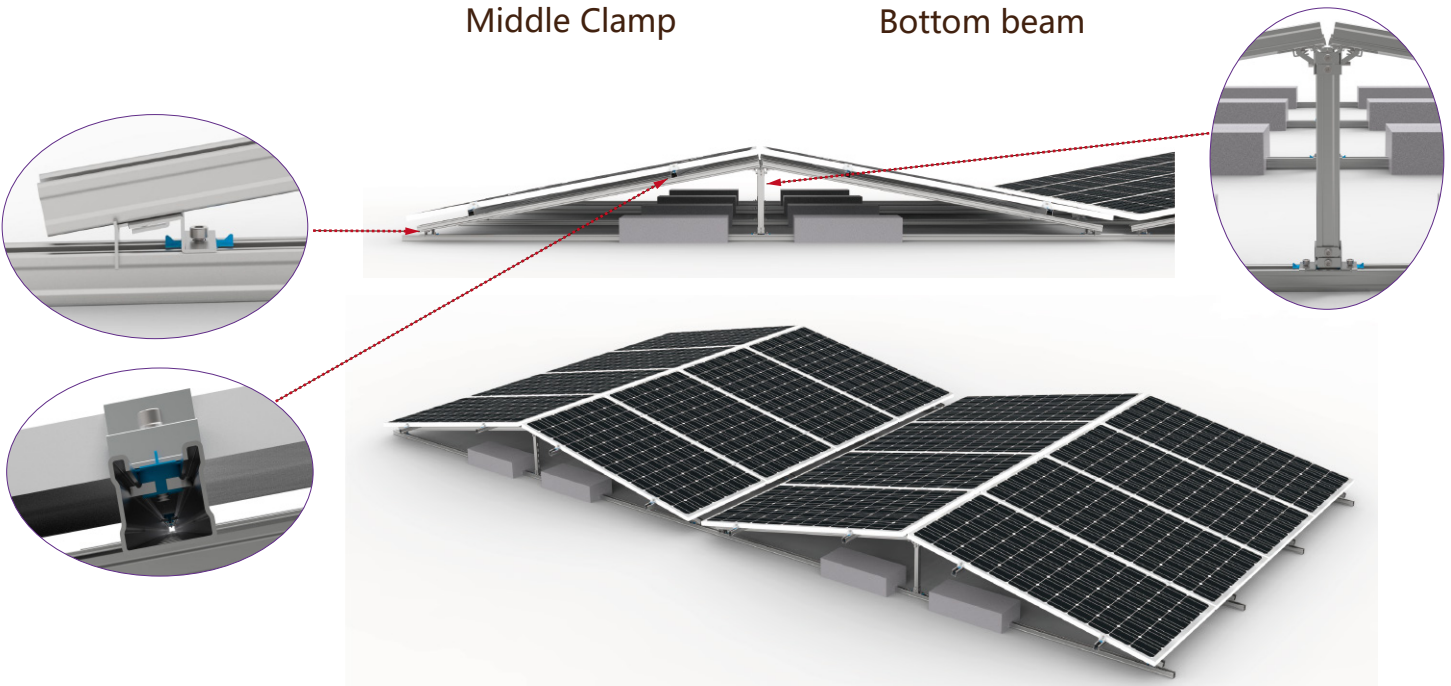
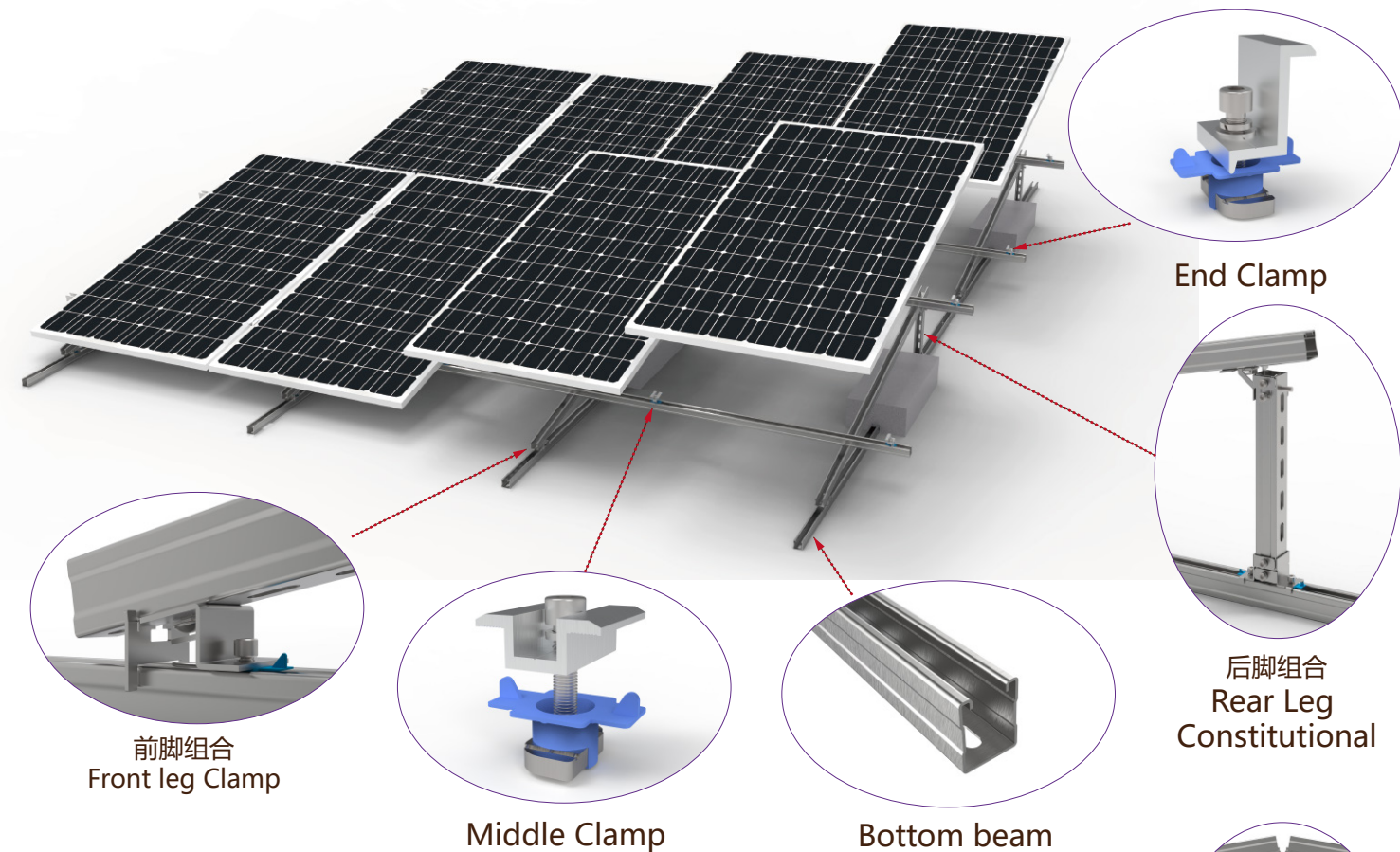


Bidirectional Array



- Technical Details:
1.Installation site; Flat Roof
2.Module Orientation; Landscape
3.Angle; 10° 、 15° 、 20° 。
4.Wind load: ≤60m/s
- 5.Snow load;≤1.6KN/ m²
6.Material;Galvanized Steel/ZMA-Steel
7.Surface Treatment: Galvanized/ZMA Coating
8.Quality Warranty 12 years, Service life of 25 years.
- Applicable standard: Japan JIS C8955:2017、 China GB 50009 2001、 Europe EN 1991-1-4:2005、 India: IS:875、 Australia AS NZ 1170、 USA ASCE7 wind load、 Malaysia MS 1553:2002 And other national standards.

Flat Roof Mounting Series-Steel Ballast Brack (With Rail)



- Technical Details:
1.Installation site; Flat Roof
2.Module Orientation; Landscape
3.Angle; 10°
4.Wind load;≤60m/s
- 5.Snow load;≤1.6KN/ m²
6.Material;Galvanized Steel/ZMA-Steel
7.Surface Treatment: Galvanized/ZMA Coating
8.Quality Warranty 12 years, Service life of 25 years.
- Applicable standard: Japan JIS C8955:2017、 China GB 50009 2001、 Europe EN 1991-1-4:2005、 India: IS:875、 Australia AS NZ 1170、 USA ASCE7 wind load、 Malaysia MS 1553:2002 And other national standards.

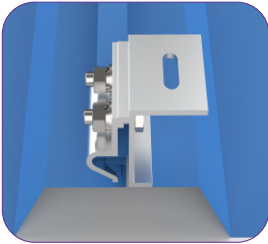
ACCESSORIES - Roof Rail Series

	<div>SXRoof-B1-Rail</div> <div>Material: AL6005-T5</div> <div>Surface Treatment : Anodized</div> <div>Color: Natural / Black or Customize</div> <div>Customize: Customize or Spot Supply</div>		<div>SXRoof-B2-Rail</div> <div>Material: AL6005-T5</div> <div>Surface Treatment : Anodized</div> <div>Color: Natural / Black or Customize</div> <div>Customize: Customize or Spot Supply</div>
	<div>SXRoof-B3-Rail</div> <div>Material: AL6005-T5</div> <div>Surface Treatment : Anodized</div> <div>Color: Natural / Black or Customize</div> <div>Customize: Customize or Spot Supply</div>		<div>SXRoof-B4-Rail</div> <div>Material: AL6005-T5</div> <div>Surface Treatment : Anodized</div> <div>Color: Natural / Black or Customize</div> <div>Customize: Customize or Spot Supply</div>
	<div>SXRoof-B5-Rail</div> <div>Material: AL6005-T5</div> <div>Surface Treatment : Anodized</div> <div>Color: Natural / Black or Customize</div> <div>Customize: Customize or Spot Supply</div>		<div>SXRoof-B6-Rail</div> <div>Material: AL6005-T5</div> <div>Surface Treatment : Anodized</div> <div>Color: Natural / Black or Customize</div> <div>Customize: Customize or Spot Supply</div>
	<div>SXRoof-33*40-Rail</div> <div>Material: AL6005-T5</div> <div>Surface Treatment : Anodized</div> <div>Color: Natural / Black or Customize</div> <div>Customize: Customize or Spot Supply</div>		<div>SXRoof-38*40-Rail</div> <div>Material: AL6005-T5</div> <div>Surface Treatment : Anodized</div> <div>Color: Natural / Black or Customize</div> <div>Customize: Customize or Spot Supply</div>
	<div>SXRoof-UN40*40-Rail</div> <div>Material: AL6005-T5</div> <div>Surface Treatment : Anodized</div> <div>Color: Natural / Black or Customize</div> <div>Customize: Customize or Spot Supply</div>		<div>SXRoof-UN30*40-Rail</div> <div>Material: AL6005-T5</div> <div>Surface Treatment : Anodized</div> <div>Color: Natural / Black or Customize</div> <div>Customize: Customize or Spot Supply</div>
	<div>SXRoof-UNB30*40-Rail</div> <div>Material: AL6005-T5</div> <div>Surface Treatment : Anodized</div> <div>Color: Natural / Black or Customize</div> <div>Customize: Customize or Spot Supply</div>		<div>SXRoof-UNB40*40-Rail</div> <div>Material: AL6005-T5</div> <div>Surface Treatment : Anodized</div> <div>Color: Natural / Black or Customize</div> <div>Customize: Customize or Spot Supply</div>

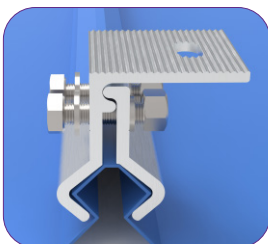
ACCESSORIES - Roof Quick Mounting Mini Rail Series

	<div>SXRoof-MiniU1-Rail</div> <div>Material: AL6005-T5</div> <div>Surface Treatment : Anodized</div> <div>Color: Natural / Black or Customize</div> <div>Customize: Customize or Spot Supply</div>		<div>SXRoof-MiniU2-Rail</div> <div>Material: AL6005-T5</div> <div>Surface Treatment : Anodized</div> <div>Color: Natural / Black or Customize</div> <div>Customize: Customize or Spot Supply</div>
	<div>SXRoof-MiniU27-Rail</div> <div>Material: AL6005-T5</div> <div>Surface Treatment : Anodized</div> <div>Color: Natural / Black or Customize</div> <div>Customize: Customize or Spot Supply</div>		<div>SXRoof-MiniT41-Rail</div> <div>Material: AL6005-T5</div> <div>Surface Treatment : Anodized</div> <div>Color: Natural / Black or Customize</div> <div>Customize: Customize or Spot Supply</div>
	<div>SXRoof-MiniT22-Rail</div> <div>Material: AL6005-T5</div> <div>Surface Treatment : Anodized</div> <div>Color: Natural / Black or Customize</div> <div>Customize: Customize or Spot Supply</div>		<div>SXRoof-MiniT23-Rail</div> <div>Material: AL6005-T5</div> <div>Surface Treatment : Anodized</div> <div>Color: Natural / Black or Customize</div> <div>Customize: Customize or Spot Supply</div>
	<div>SXRoof-MiniT27-Rail</div> <div>Material: AL6005-T5</div> <div>Surface Treatment : Anodized</div> <div>Color: Natural / Black or Customize</div> <div>Customize: Customize or Spot Supply</div>		<div>SXRoof-MiniT35-Rail</div> <div>Material: AL6005-T5</div> <div>Surface Treatment : Anodized</div> <div>Color: Natural / Black or Customize</div> <div>Customize: Customize or Spot Supply</div>
	<div>SXRoof-MiniT50-Rail</div> <div>Material: AL6005-T5</div> <div>Surface Treatment : Anodized</div> <div>Color: Natural / Black or Customize</div> <div>Customize: Customize or Spot Supply</div>		<div>SXRoof-MiniT60-Rail</div> <div>Material: AL6005-T5</div> <div>Surface Treatment : Anodized</div> <div>Color: Natural / Black or Customize</div> <div>Customize: Customize or Spot Supply</div>
	<div>SXRoof-MiniT100-Rail</div> <div>Material: AL6005-T5</div> <div>Surface Treatment : Anodized</div> <div>Color: Natural / Black or Customize</div> <div>Customize: Customize or Spot Supply</div>		

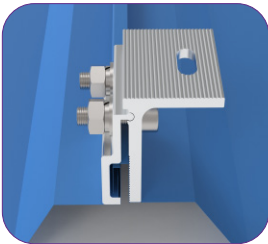
ACCESSORIES - Metal Roof Clamp Series



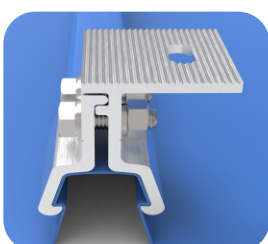
SXRoof-CG-Standing Seam 01
Material: AL6005-T5
Surface Treatment : Anodized
Color: Natural / Black or Customize
Customize: Customize or Spot Supply



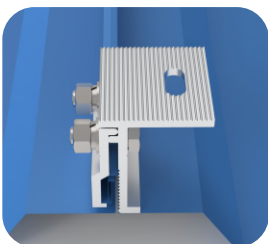
SXRoof-CG-KlipLok 01
Material: AL6005-T5
Surface Treatment : Anodized
Color: Natural / Black or Customize
Customize: Customize or Spot Supply



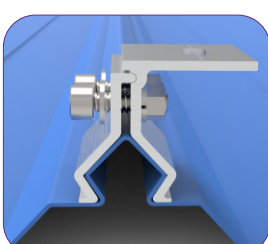
SXRoof-CG-Standing Seam 02
Material: AL6005-T5
Surface Treatment : Anodized
Color: Natural / Black or Customize
Customize: Customize or Spot Supply



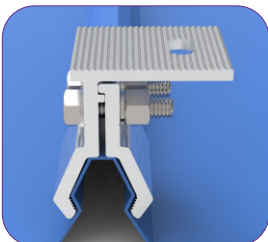
SXRoof-CG-KlipLok 02
Material: AL6005-T5
Surface Treatment : Anodized
Color: Natural / Black or Customize
Customize: Customize or Spot Supply



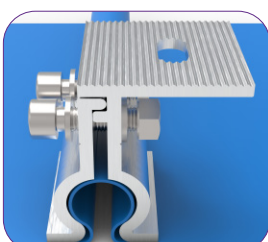
SXRoof-CG-Standing Seam 03
Material: AL6005-T5
Surface Treatment : Anodized
Color: Natural / Black or Customize
Customize: Customize or Spot Supply



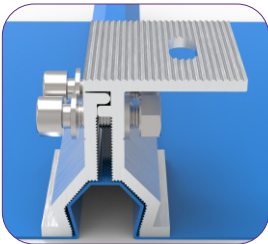
SXRoof-CG-KlipLok 03
Material: AL6005-T5
Surface Treatment : Anodized
Color: Natural / Black or Customize
Customize: Customize or Spot Supply



SXRoof-CG-KlipLok 04
Material: AL6005-T5
Surface Treatment : Anodized
Color: Natural / Black or Customize
Customize: Customize or Spot Supply



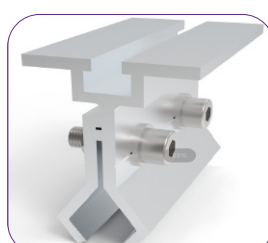
SXRoof-CG-Standing Seam01
Material: AL6005-T5
Surface Treatment : Anodized
Color: Natural / Black or Customize
Customize: Customize or Spot Supply



SXRoof-CG-KlipLok 05
Material: AL6005-T5
Surface Treatment : Anodized
Color: Natural / Black or Customize
Customize: Customize or Spot Supply



SXRoof-CG-Single Hook01
Material: AL6005-T5
Surface Treatment : Anodized
Color: Natural / Black or Customize
Customize: Customize or Spot Supply

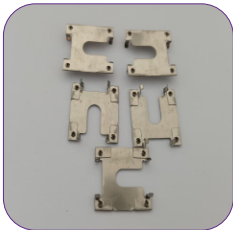


SXRoof-CG-KlipLok 06
Material: AL6005-T5
Surface Treatment : Anodized
Color: Natural / Black or Customize
Customize: Customize or Spot Supply



SXRoof-CG-KlipLok 07
Material: AL6005-T5
Surface Treatment : Anodized
Color: Natural / Black or Customize
Customize: Customize or Spot Supply

ACCESSORIES - Grounding Clip And Cable Clip Series



Grounding Clip SX01
Material:Stainless Steel
Color:Natural Silver
Specification:Customize or Spot Supply



Grounding Clip SX08
Material:Stainless Steel
Color:Natural Silver
Specification:Customize or Spot Supply



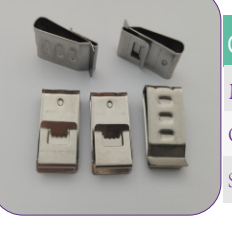
Cable Clip SXN02
Material:Stainless Steel
Color:Natural Silver
Specification:Customize or Spot Supply



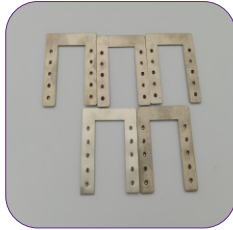
Grounding Clip SX02
Material:Stainless Steel
Color:Natural Silver
Specification:Customize or Spot Supply



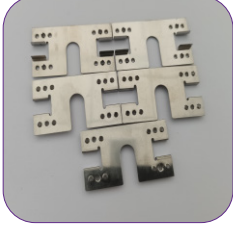
Grounding Clip SX09
Material:Stainless Steel
Color:Natural Silver
Specification:Customize or Spot Supply



Cable Clip SXN03
Material:Stainless Steel
Color:Natural Silver
Specification:Customize or Spot Supply



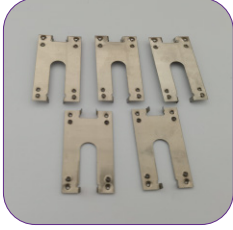
Grounding Clip SX03
Material:Stainless Steel
Color:Natural Silver
Specification:Customize or Spot Supply



Grounding Clip SX10
Material:Stainless Steel
Color:Natural Silver
Specification:Customize or Spot Supply



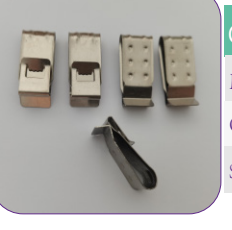
Cable Clip SXN04
Material:Stainless Steel
Color:Natural Silver
Specification:Customize or Spot Supply



Grounding Clip SX04
Material:Stainless Steel
Color:Natural Silver
Specification:Customize or Spot Supply



Grounding Clip SX11
Material:Stainless Steel
Color:Natural Silver
Specification:Customize or Spot Supply



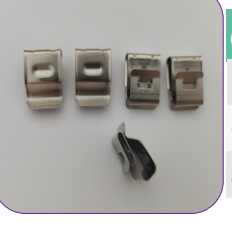
Cable Clip SXN05
Material:Stainless Steel
Color:Natural Silver
Specification:Customize or Spot Supply



Grounding Clip SX05
Material:Stainless Steel
Color:Natural Silver
Specification:Customize or Spot Supply



Grounding Clip SX12
Material:Stainless Steel
Color:Natural Silver
Specification:Customize or Spot Supply



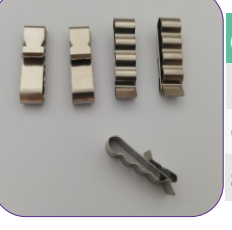
Cable Clip SXN06
Material:Stainless Steel
Color:Natural Silver
Specification:Customize or Spot Supply



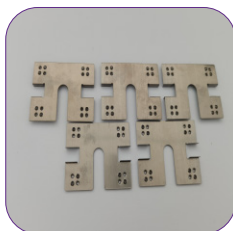
Grounding Clip SX06
Material:Stainless Steel
Color:Natural Silver
Specification:Customize or Spot Supply



Grounding Clip SX13
Material:Stainless Steel
Color:Natural Silver
Specification:Customize or Spot Supply



Cable Clip SXN07
Material:Stainless Steel
Color:Natural Silver
Specification:Customize or Spot Supply



Grounding Clip SX07
Material:Stainless Steel
Color:Natural Silver
Specification:Customize or Spot Supply



Cable Clip SXN01
Material:Stainless Steel
Color:Natural Silver
Specification:Customize or Spot Supply



Cable Clip SXN08
Material:Stainless Steel
Color:Natural Silver
Specification:Customize or Spot Supply



ACCESSORIES - Roof Hook Series



SX-1# Fixing Tile Hook
Material: Stainless Steel SUS304
Surface Treatment : Shot Blasting
Color: Natural
Customize: Customize or Spot Supply



SX-1#Twist Fixing Tile Hook
Material: Stainless Steel SUS304
Surface Treatment : Shot Blasting
Color: Natural
Customize: Customize or Spot Supply



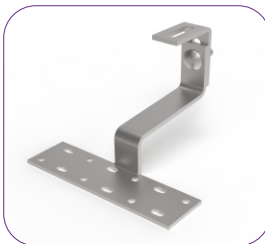
SX-1#Narrow Fixing Tile Hook
Material: Stainless Steel SUS304
Surface Treatment : Shot Blasting
Color: Natural
Customize: Customize or Spot Supply



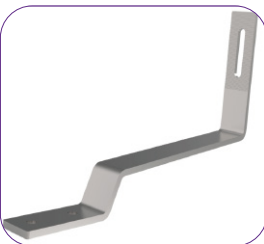
SX-1# Adjusting Fixing Tile Hook
Material: Stainless Steel SUS304
Surface Treatment : Shot Blasting
Color: Natural
Customize: Customize or Spot Supply



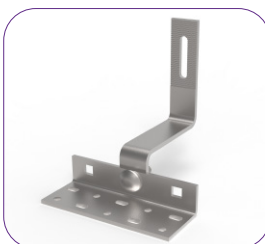
SX-3# Adjusting Fixing Tile Hook
Material: Stainless Steel SUS304
Surface Treatment : Shot Blasting
Color: Natural
Customize: Customize or Spot Supply



SX-4# Adjusting Fixing Tile Hook
Material: Stainless Steel SUS304
Surface Treatment : Shot Blasting
Color: Natural
Customize: Customize or Spot Supply



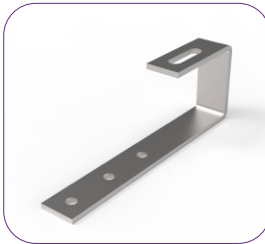
SX-6# Fixing Tile Hook
Material: Stainless Steel SUS304
Surface Treatment : Shot Blasting
Color: Natural
Customize: Customize or Spot Supply



SX-8# Fixing Tile Hook
Material: Stainless Steel SUS304
Surface Treatment : Shot Blasting
Color: Natural
Customize: Customize or Spot Supply



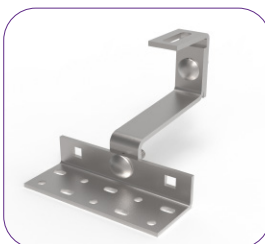
SX-9# Fixing Tile Hook
Material: Stainless Steel SUS304
Surface Treatment : Shot Blasting
Color: Natural
Customize: Customize or Spot Supply



SX-10# Fixing Tile Hook
Material: Stainless Steel SUS304
Surface Treatment : Shot Blasting
Color: Natural
Customize: Customize or Spot Supply



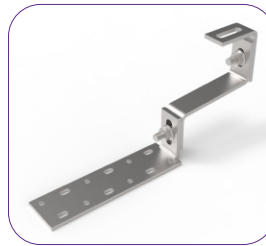
SX-12# Fixing Tile Hook
Material: Stainless Steel SUS304
Surface Treatment : Shot Blasting
Color: Natural
Customize: Customize or Spot Supply



SX-13# Adjusting Fixing Tile Hook
Material: Stainless Steel SUS304
Surface Treatment : Shot Blasting
Color: Natural
Customize: Customize or Spot Supply



SX-14# Adjusting Fixing Tile Hook
Material: Stainless Steel SUS304
Surface Treatment : Shot Blasting
Color: Natural
Customize: Customize or Spot Supply



SX-15# Adjusting Fixing Tile Hook
Material: Stainless Steel SUS304
Surface Treatment : Shot Blasting
Color: Natural
Customize: Customize or Spot Supply



SX-16# Adjusting Fixing Tile Hook
Material: Stainless Steel SUS304
Surface Treatment : Shot Blasting
Color: Natural
Customize: Customize or Spot Supply



SX-17# Fixing Tile Hook
Material: Stainless Steel SUS304
Surface Treatment : Shot Blasting
Color: Natural
Customize: Customize or Spot Supply

ACCESSORIES - OTHERS



SX-11#Single Hook
Material: Stainless Steel SUS304
Surface Treatment : Shot Blasting
Color: Natural
Customize: Customize or Spot Supply



SX-11#Adjusting Single Hook
Material: Stainless Steel SUS304
Surface Treatment : Shot Blasting
Color: Natural
Customize: Customize or Spot Supply



SX-7#Adjusting Single Hook
Material: Stainless Steel SUS304
Surface Treatment : Shot Blasting
Color: Natural
Customize: Customize or Spot Supply



Adjusting End Clamp 30-45 Kit
Material: AL6005-T5
Surface Treatment : Anodized
Color: Natural / Black or Customize
Customize: Customize or Spot Supply



Hanger Bolt & L Feet Kit
Material: AL6005-T5
Surface Treatment : Anodized
Color: Natural / Black or Customize
Customize: Customize or Spot Supply



Hanger Bolt Kit
Material: Stainless Steel SUS304
Surface Treatment : Shot Blasting
Color: Natural
Customize: Customize or Spot Supply

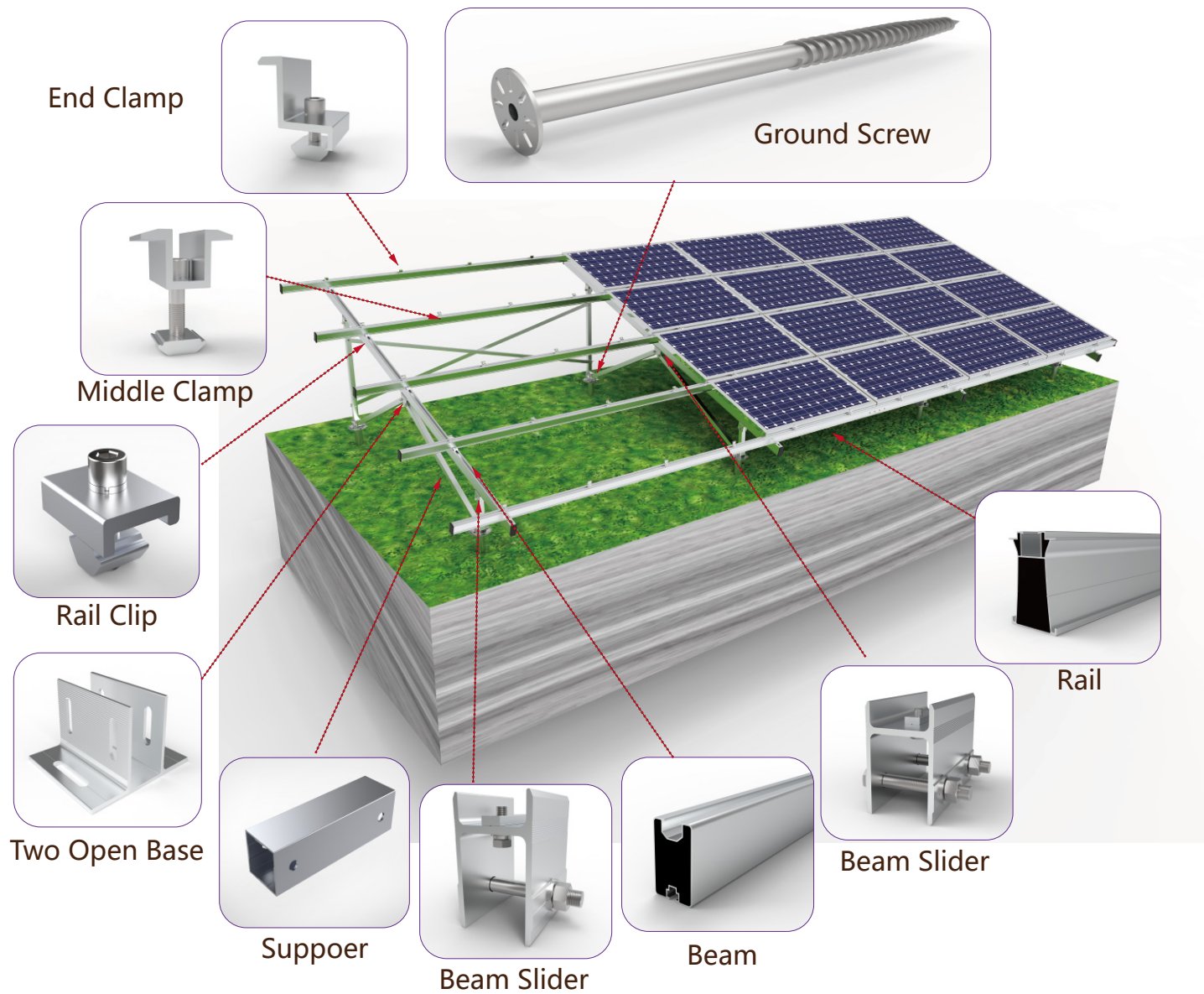


Grounding Lug Kit
Material: AL6005-T5
Surface Treatment : Anodized
Color: Natural / Black or Customize
Customize: Customize or Spot Supply



FASTENING ELEMENTS
Material: SUS304/316
Diameter: Customize
Length: Customize
Customize: Customize or Spot Supply

Aluminum Ground Mount



PRODUCT INTRODUCTION

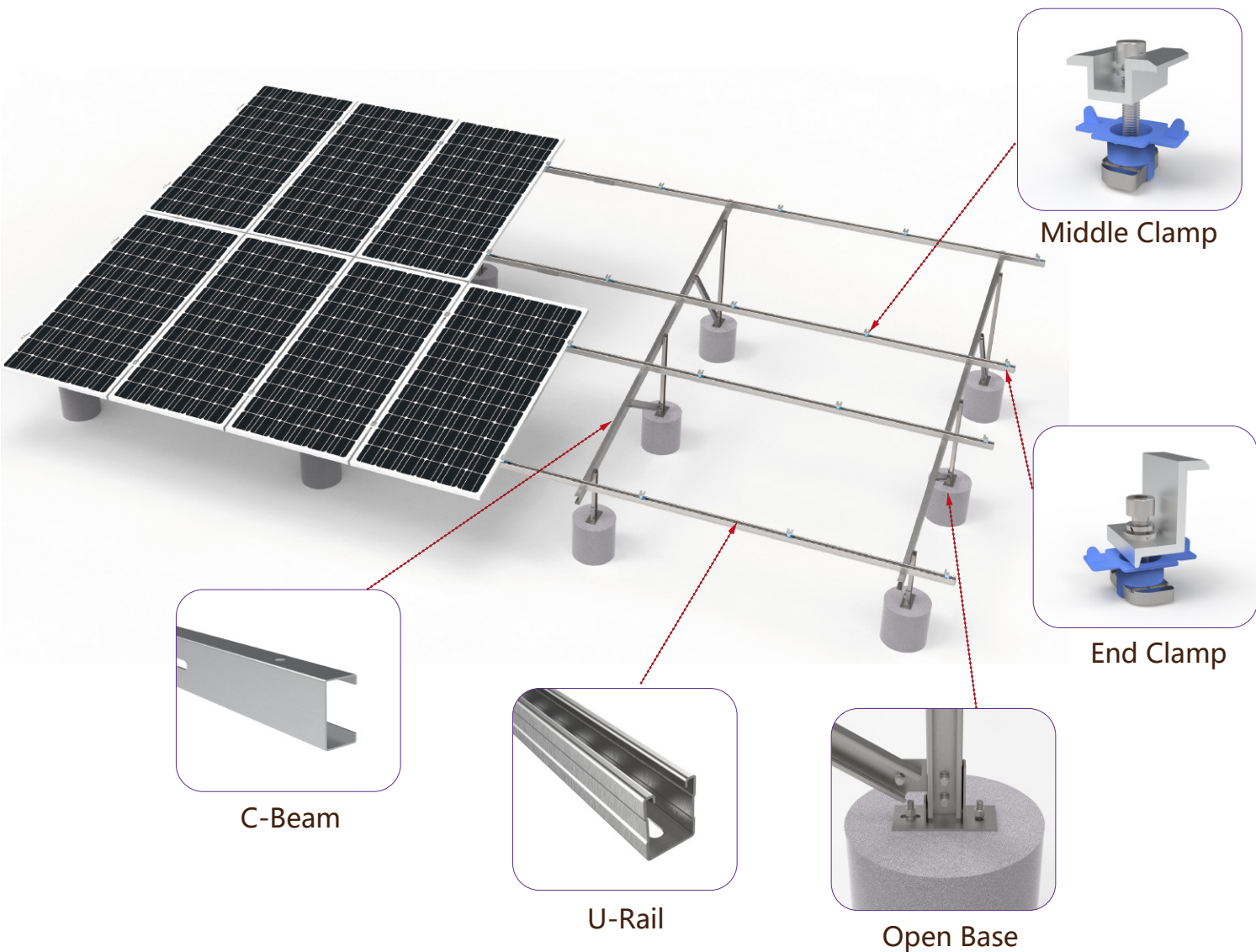
Aluminum Ground Mount,Material aluminum Al6005-t5, through professional design to make the support parts and accessories perfectly connected, easy to install, safe and reliable.

- Technical Details:

 - 1. Angle: 0~60° .
 - 2.Module Orientation: : Module Vertical Or Landscape
 - 3.Wind load: ≤ 60m/s
 - 4.Snow load: ≤ 1.6KN/ m²
- 5.Material: Aluminum AL6005-T5 (AA10~AA20)
 - 6.Surface Treatment: Natural anodized、Black anodized、 And other color customizations.
 - 7.Quality Warranty 12 years , Service life of 25 years.

Applicable standard: Japan JIS C8955:2017、 China GB 50009 2001、 Europe EN 1991-1-4:2005、 India: IS:875、 Australia AS NZ 1170、 USA ASCE7 wind load、 Malaysia MS 1553:2002 And other national standards.

Steel Ground Mount (U+C)



PRODUCT INTRODUCTION

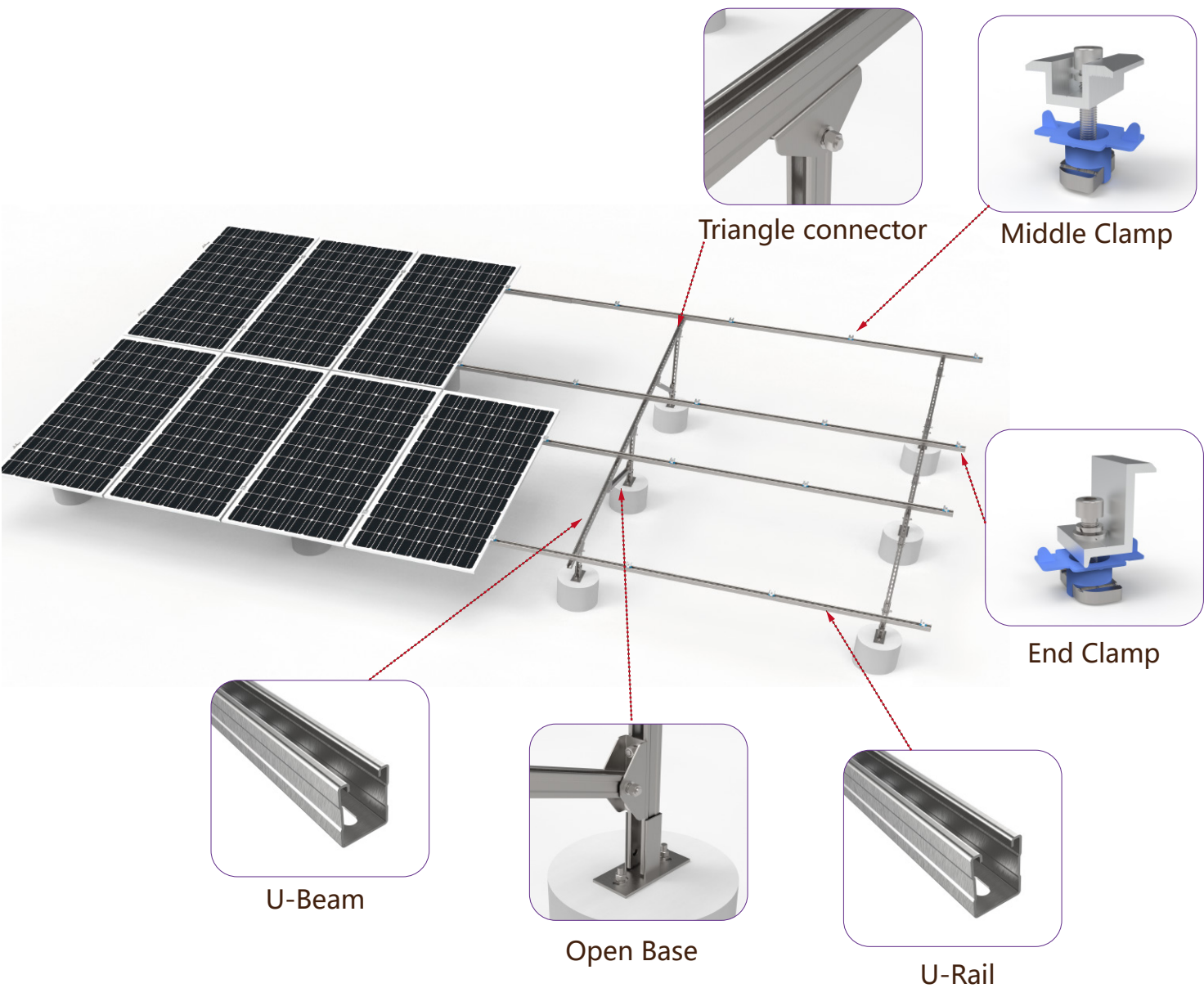
Steel Ground Mount,Material Galvanized steel/ZMA-Steel, through professional design to make the support parts and accessories perfectly connected, easy to install, safe and reliable.

- Technical Details:

 - 1. Angle: 0~60° .
 - 2.Module Orientation: : Module Vertical Or Landscape
 - 3.Wind load: ≤ 60m/s
 - 4.Snow load: ≤ 1.6KN/ m²
- 5.Material: Galvanized steel/ZMA-Steel
 - 6.Surface Treatment: Galvanized/ZMA Coating
 - 7.Quality Warranty 12 years , Service life of 25 years.

Applicable standard: Japan JIS C8955:2017、 China GB 50009 2001、 Europe EN 1991-1-4:2005、 India: IS:875、 Australia AS NZ 1170、 USA ASCE7 wind load、 Malaysia MS 1553:2002 And other national standards.

Steel Ground Mount (U)



PRODUCT INTRODUCTION

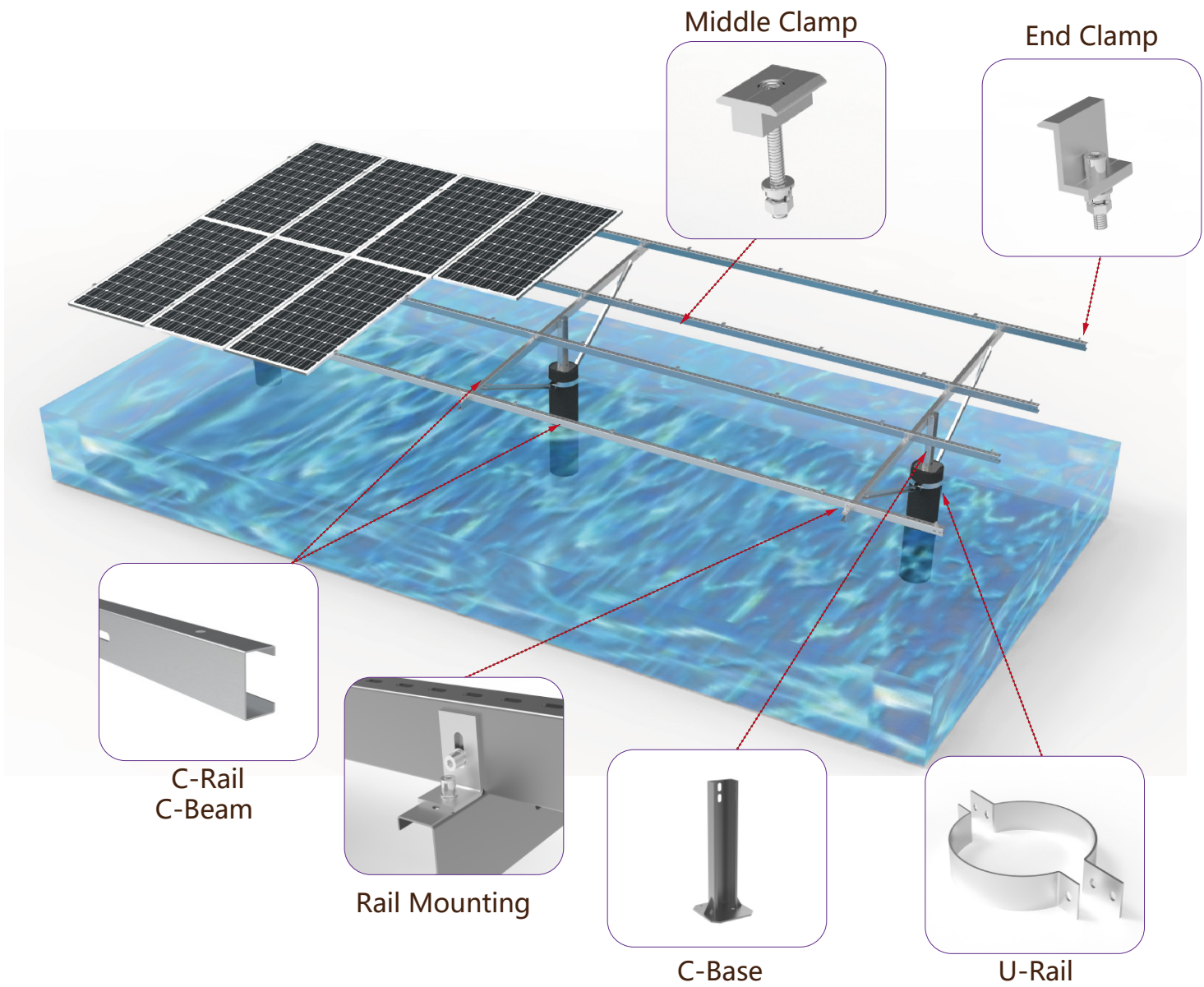
Steel Ground Mount,Material Galvanized steel/ZMA-Steel, through professional design to make the support parts and accessories perfectly connected, easy to install, safe and reliable.

- Technical Details:

 1. Angle; 0~60° .
 - 2.Module Orientation: : Module Vertical Or Landscape
 - 3.Wind load: ≤ 60m/s
 - 4.Snow load: ≤ 1.6KN/ m²
- 5.Material: Galvanized steel/ZMA-Steel
 - 6.Surface Treatment: Galvanized/ZMA Coating
 - 7.Quality Warranty 12 years, Service life of 25 years.

Applicable standard: Japan JIS C8955:2017、 China GB 50009 2001、 Europe EN 1991-1-4:2005、 India: IS:875、 Australia AS NZ 1170、 USA ASCE7 wind load、 Malaysia MS 1553:2002 And other national standards.

PHC PILE GROUND MOUNT



PRODUCT INTRODUCTION

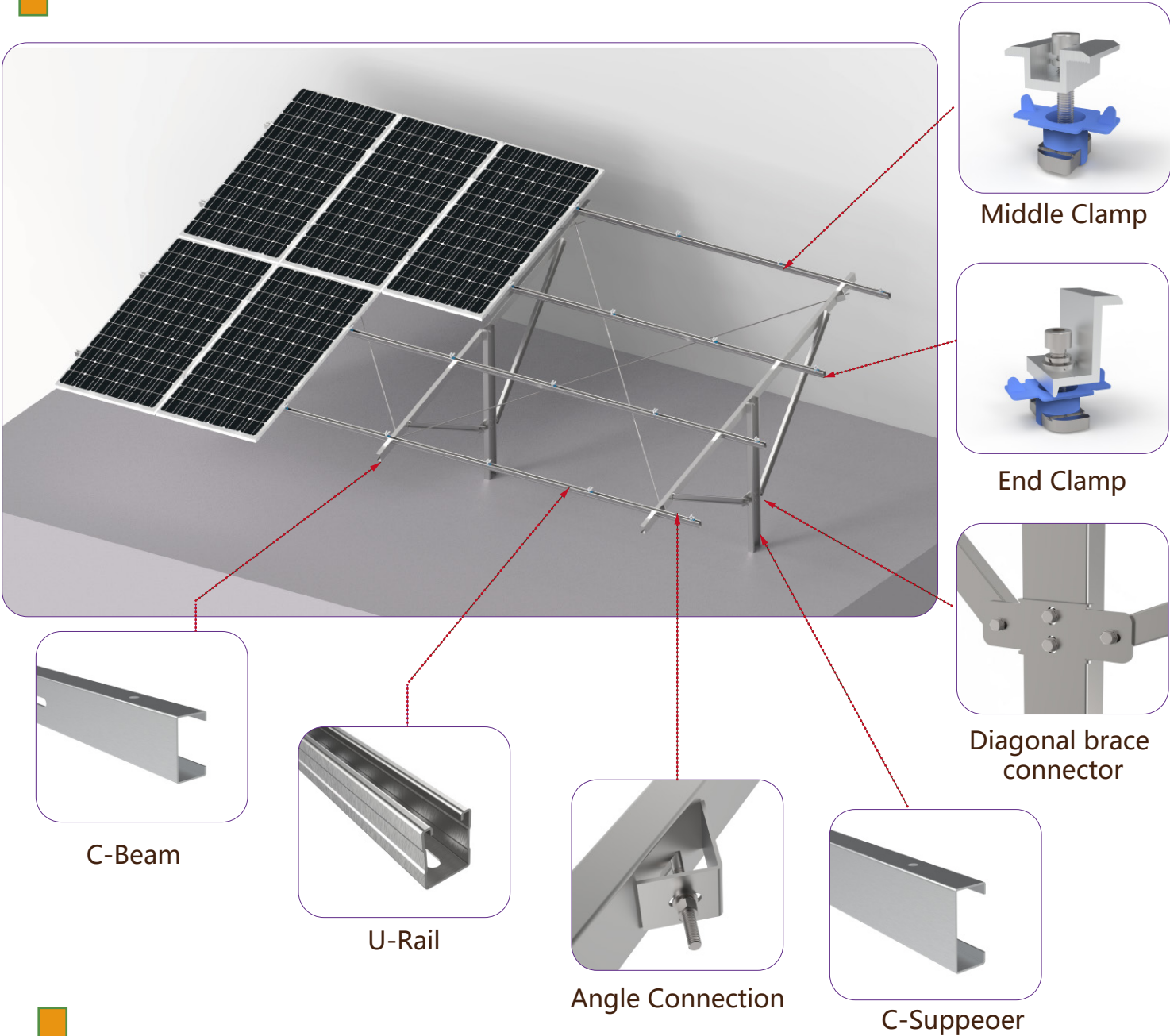
PHC Pile Ground Mount,Material Galvanized steel/ZMA-Steel, through professional design to make the support parts and accessories perfectly connected, easy to install, safe and reliable.

- Technical Details:

 1. Angle; 0~60° .
 - 2.Module Orientation: : Module Vertical Or Landscape
 - 3.Wind load: ≤ 60m/s
 - 4.Snow load: ≤ 1.6KN/ m²
- 5.Material: Galvanized steel/ZMA-Steel
 - 6.Surface Treatment: Galvanized/ZMA Coating
 - 7.Quality Warranty 12 years, Service life of 25 years.

Applicable standard: Japan JIS C8955:2017、 China GB 50009 2001、 Europe EN 1991-1-4:2005、 India: IS:875、 Australia AS NZ 1170、 USA ASCE7 wind load、 Malaysia MS 1553:2002 And other national standards.

Pole Steel Ground Mounting System



PRODUCT INTRODUCTION

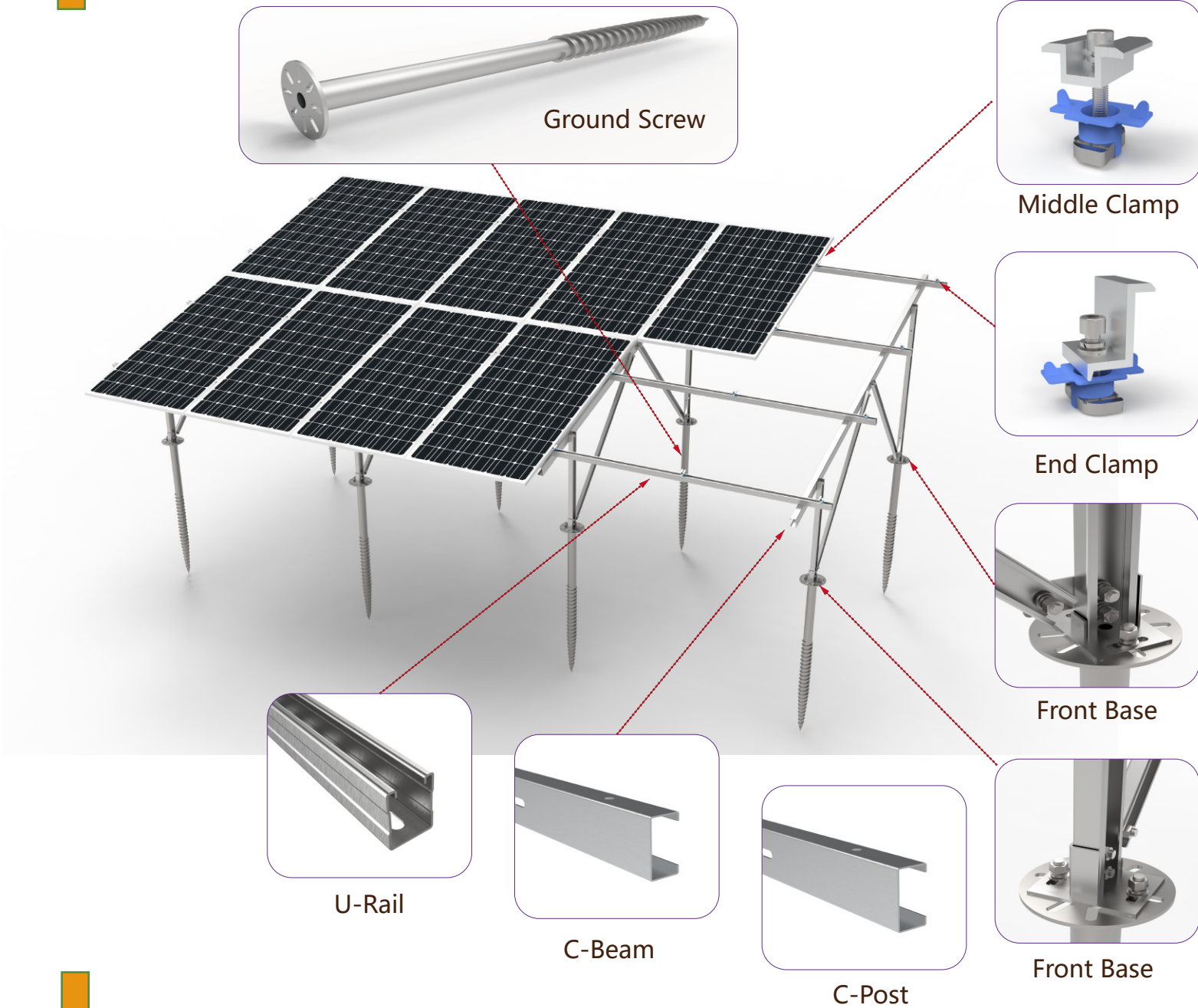
Pole Steel Ground Mounting System,Material Galvanized steel/ZMA-Steel, through professional design to support pieces and lighting tile perfect connection, easy installation, safe and reliable.

- Technical Details:

 1. Angle; 0~60° .
 - 2.Module Orientation: : Module Vertical Or Landscape
 - 3.Wind load: ≤ 60m/s
 - 4.Snow load: ≤ 1.6KN/ m²
- 5.Material: Galvanized steel/ZMA-Steel
 - 6.Surface Treatment: Galvanized/ZMA Coating
 - 7.Quality Warranty 12 years, Service life of 25 years.

Applicable standard: Japan JIS C8955:2017、 China GB 50009 2001、 Europe EN 1991-1-4:2005、 India: IS:875、 Australia AS NZ 1170、 USA ASCE7 wind load、 Malaysia MS 1553:2002 And other national standards.

Ground Screw Solar Mounting System



PRODUCT INTRODUCTION

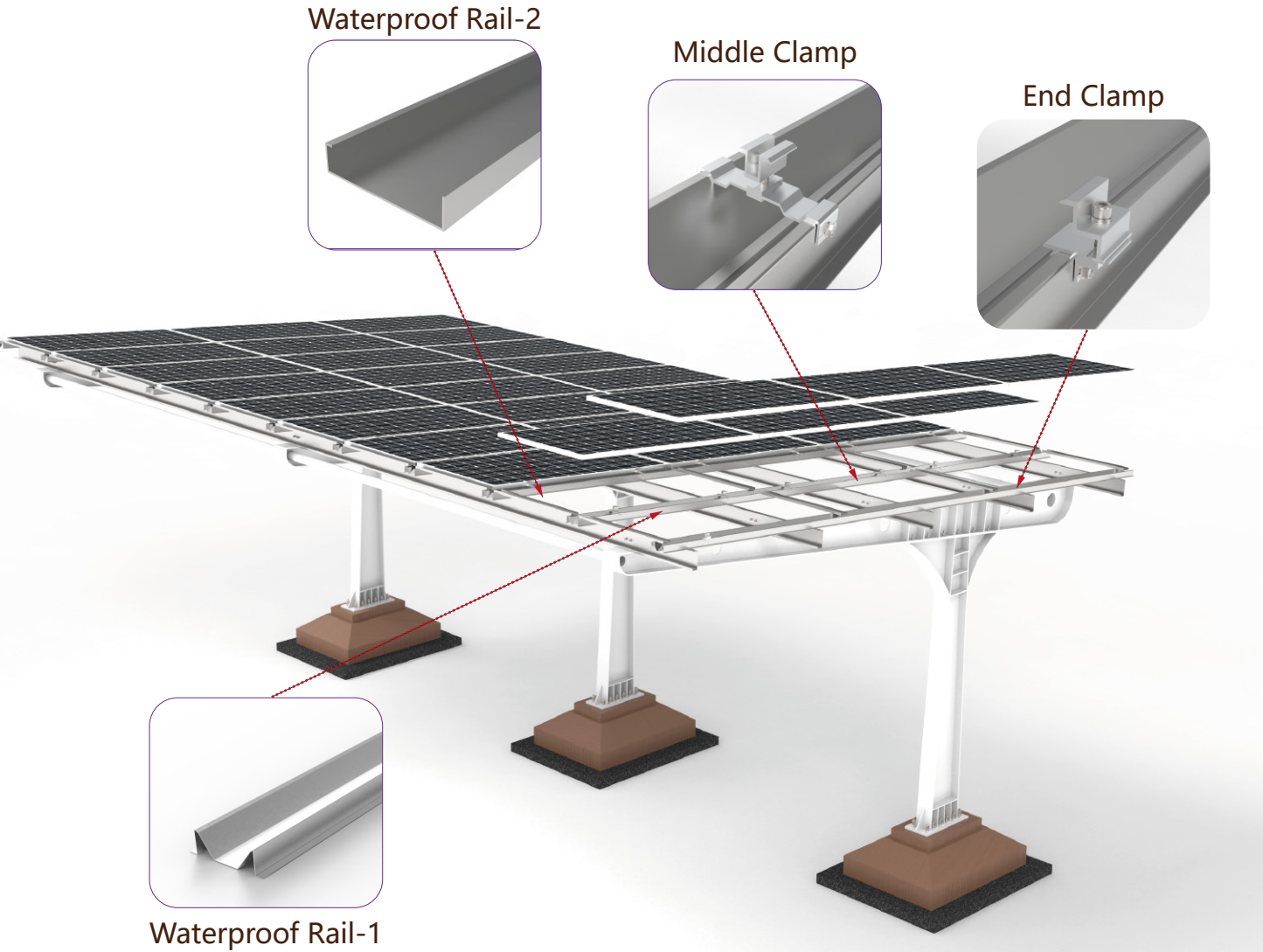
Ground Screw Solar Mounting System,Material Galvanized steel/ZMA-Steel, through professional design to support pieces and lighting tile perfect connection, easy installation, safe and reliable.

- Technical Details:

 1. Angle; 0~60° .
 - 2.Module Orientation: : Module Vertical Or Landscape
 - 3.Wind load: ≤ 60m/s
 - 4.Snow load: ≤ 1.6KN/ m²
- 5.Material: Galvanized steel/ZMA-Steel
 - 6.Surface Treatment: Galvanized/ZMA Coating
 - 7.Quality Warranty 12 years, Service life of 25 years.

Applicable standard: Japan JIS C8955:2017、 China GB 50009 2001、 Europe EN 1991-1-4:2005、 India: IS:875、 Australia AS NZ 1170、 USA ASCE7 wind load、 Malaysia MS 1553:2002 And other national standards.

Single Cantilever Carport



Single Cantilever Carport



7 Font Solar Carport Effect Picture



V Font Solar Carport Effect Picture



Arc Single Column Solar Carport Effect Picture

PRODUCT INTRODUCTION

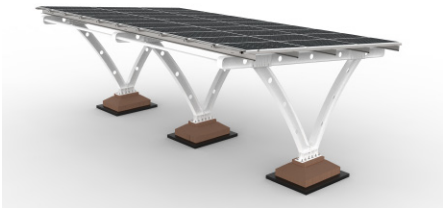
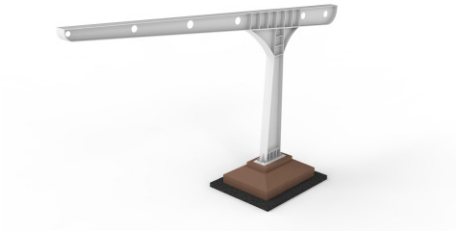
Single Gantilever Carport,Material Galvanized steel/ZMA-Steel, through professional design to make the support parts and accessories perfectly connected, easy to install, safe and reliable.

- Technical Details:

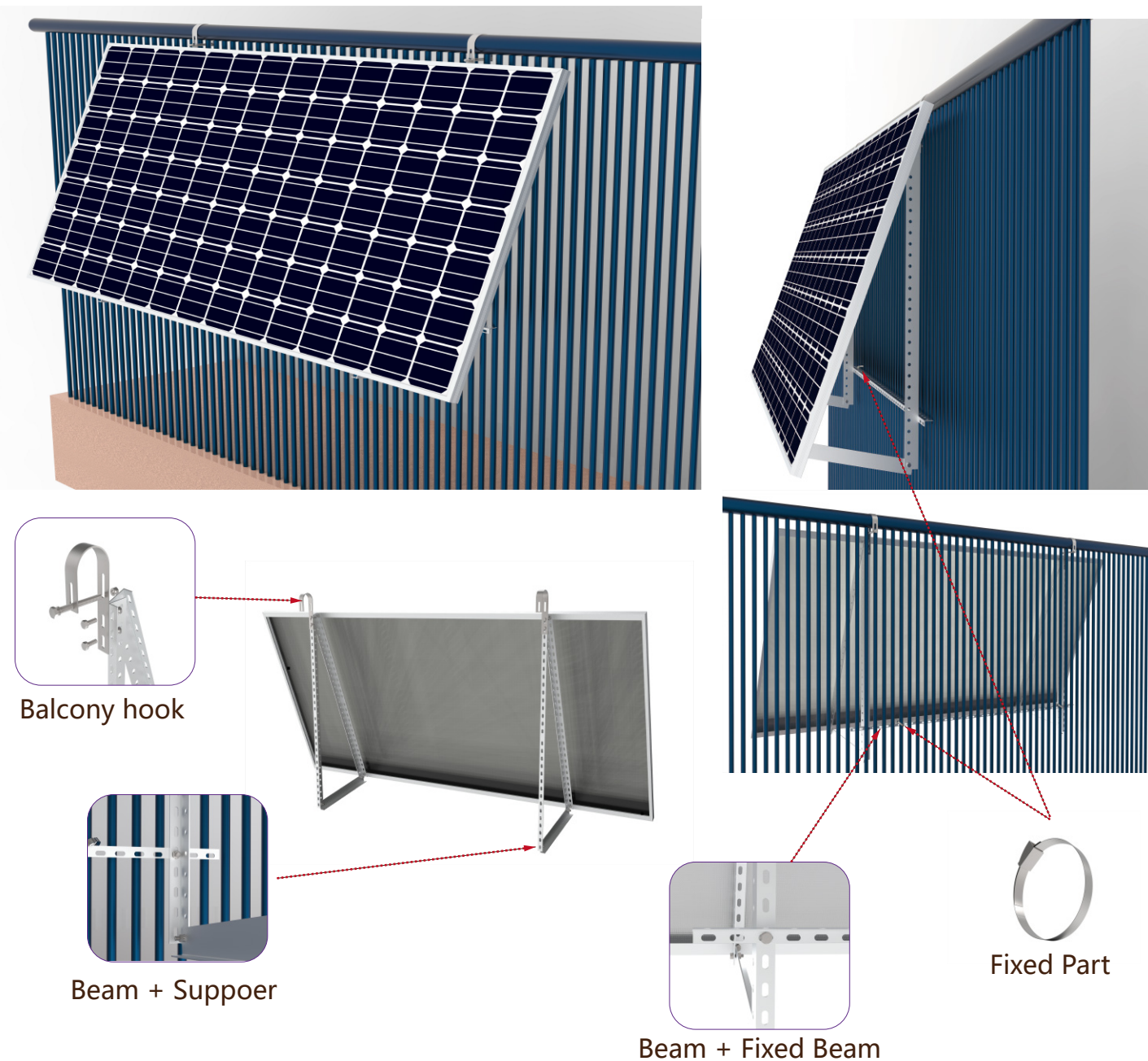
 1. Angle; 0~15°
 - 2.Module Orientation: : Module Vertical Or Landscape
 - 3.Wind load: ≤60m/s
 - 4.Snow load: ≤1.6KN/ m²

- 5.Material: Galvanized steel/ZMA-Steel
 - 6.Surface Treatment: Galvanized/ZMA Coating
 - 7.Quality Warranty 12 years, Service life of 25 years.

Applicable standard: Japan JIS C8955:2017、 China GB 50009 2001、 Europe EN 1991-1-4:2005、 India: IS:875、 Australia AS NZ 1170、 USA ASCE7 wind load、 Malaysia MS 1553:2002 And other national standards.



Balcony Solar Mount



Application scenario: Metal/Flat Roof

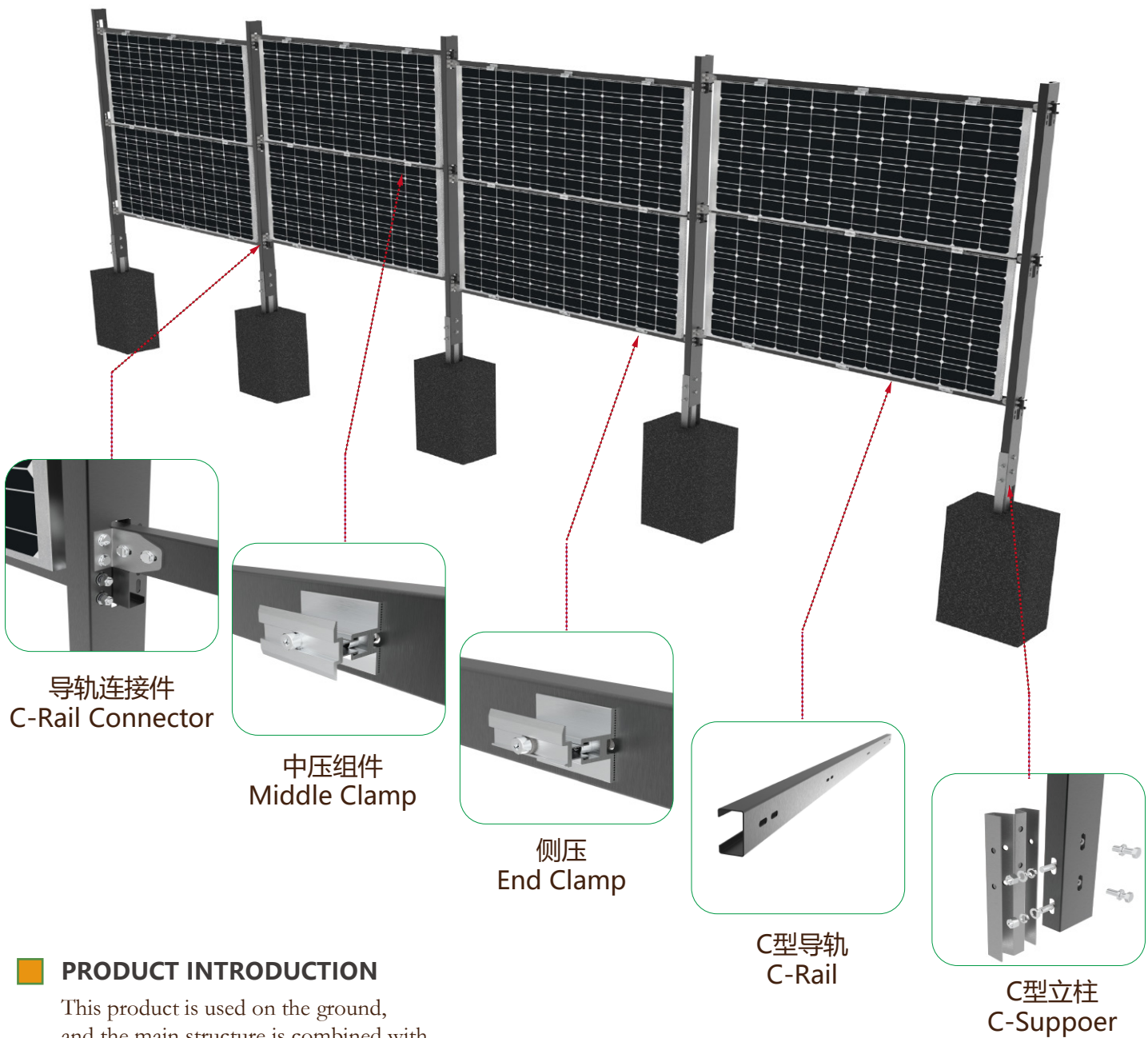
Balcony Solar Mount,Material aluminum Al6005-t5, through professional design to make the support parts and accessories perfectly connected, easy to install, safe and reliable.

- Technical Details:

 - 1. Angle: 0~45°
 - 2.Module Orientation: : Module Vertical Or Landscape
 - 3.Pull-Out Eesistance: ≥1.2KN
 - 4.Wind load: ≤60m/s
- 5.Snow load: ≤1.6KN/ m²
 - 6.Material: Aluminum AL6005-T5 (AA10~AA20)
 - 7.Surface Treatment: Natural anodized、Black anodized、And other color customizations.
 - 8.Quality Warranty 12 years , Service life of 25 years.

Applicable standard: Japan JIS C8955:2017、China GB 50009 2001、Europe EN 1991-1-4:2005、India: IS:875、Australia AS NZ 1170、USA ASCE7 wind load、Malaysia MS 1553:2002 And other national standards.

Vertical Solar Mount



PRODUCT INTRODUCTION

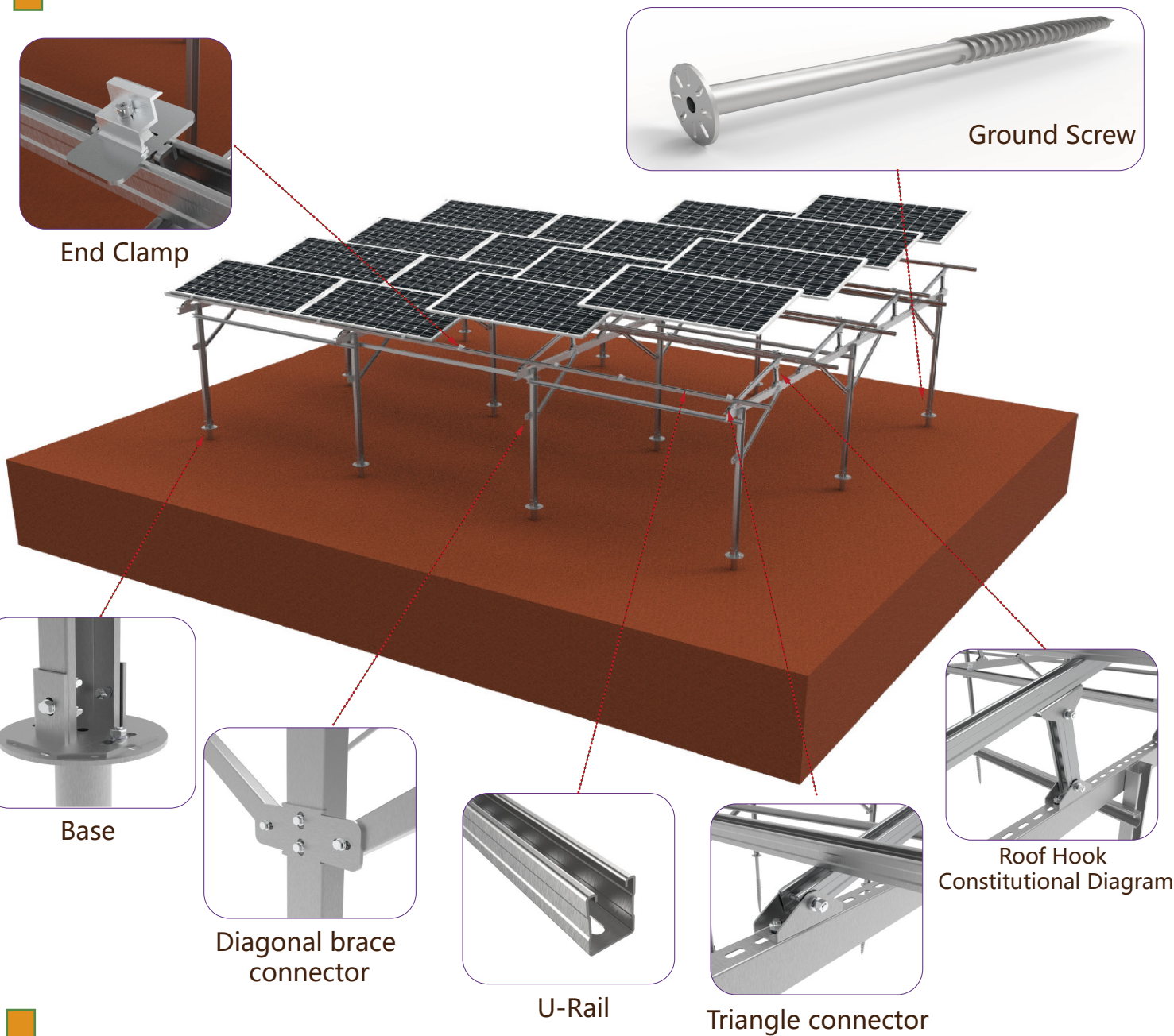
This product is used on the ground, and the main structure is combined with galvanized steel and ZMA steel. through professional design to make the support parts and accessories perfectly connected, easy to install, safe and reliable.

- Product system parameters:

 - 1. Installation position; The ground.
 - 2. Component direction: Based on actual requirements
 - 3. Pull strength: according to the design definition
 - 4. Wind carrying capacity: 38m/s
- 5. Snow load capacity: 1.6KN/ m²
 - 6. Material: Galvanized steel and ZAM steel
 - 7. Color: natural color, black and other colors custom
 - 8. Warranty 12 years, service life: 25 years

Applicable standard: Japan JIS C8955:2017、China GB 50009 2001、Europe EN 1991-1-4:2005、India: IS:875、Australia AS NZ 1170、USA ASCE7 wind load、Malaysia MS 1553:2002 And other national standards.

Solar Farm Mounting System



PRODUCT INTRODUCTION

Solar power plant installation system, the material of galvanized steel/zma steel, through professional design to make the support parts and accessories perfectly connected, easy to install, safe and reliable.

Technical Details:

1. Angle; 0~30°
2. Module Orientation: : Module Vertical Or Landscape
3. Wind load: $\leq 60\text{m/s}$
4. Snow load: $\leq 1.6\text{KN/m}^2$
5. Material: Galvanized steel/ZMA-Steel
6. Surface Treatment: Galvanized/ZMA Coating
7. Quality Warranty 12 years, Service life of 25 years.

Applicable standard: Japan JIS C8955:2017、China GB 50009 2001、Europe EN 1991-1-4:2005、India: IS:875、Australia AS NZ 1170、USA ASCE7 wind load、Malaysia MS 1553:2002 And other national standards.

CERTIFICATIONS



GLOBAL PROJECTS

